

OMAHA, NEBRASKA

RNAV (GPS) RWY 13

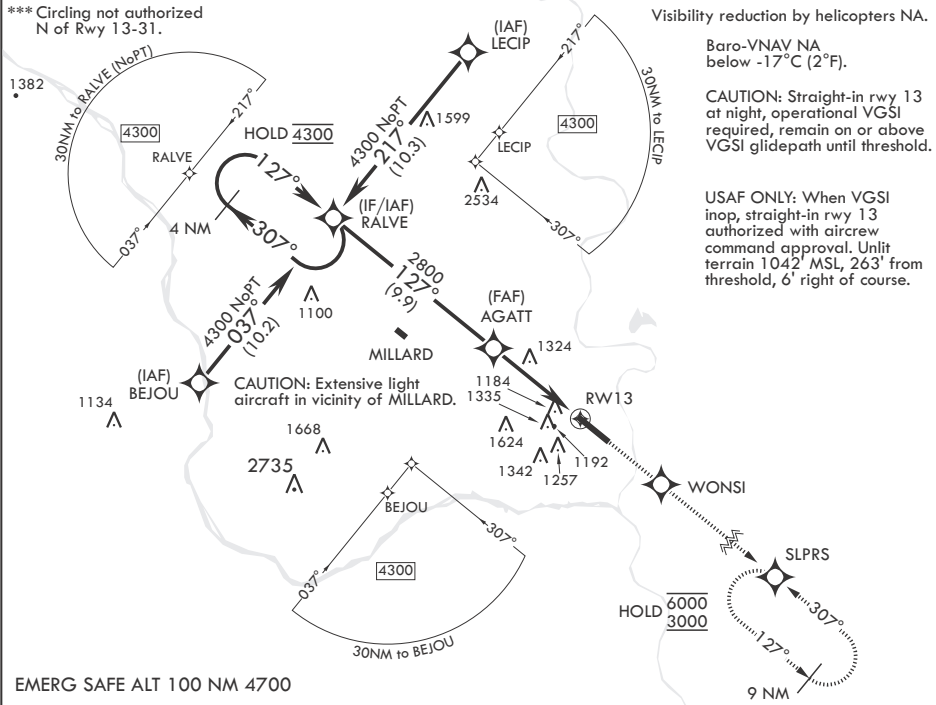
WAAS CH 91358 W13A	APCH CRS 127°	Rwy ldg TDZE Arprt Elev	10,695 1048 1048
--------------------------	------------------	-------------------------------	------------------------

- (USAF)

OFFUTT AFB (KOFF)

RNP APCH-GPS	ALSF-1	MISSED APPROACH: Climb to 3000 direct WONSJ, track 127° to SLPRS and hold.
* When ALS inop, increase vis to 1 1/4 miles. ** When ALS inop, increase CAT AB RVR to 55, vis to 1 mile; CAT CDE vis to 1 1/2 miles.		

ATIS 126.025 273.5	OMAHA APP CON/DEP CON 124.5 263.0 E 135.875 354.05 W	TOWER 123.7 279.625	GND CON 121.7 289.4
-----------------------	--	------------------------	------------------------



4 NM Holding Pattern		3000	WONSJ	tr 127°	SLPRS	ELEV 1048	TDZE 1048
GP 3.00° TCH 51		Rwy 13 ldg 10,695' Rwy 31 ldg 10,612'					
VGSJ and RNAV glidepath not coincident (VGSJ Angle 3.00/TCH 55).		RWY 13					
5.4 NM		RWY 13					
CATEGORY	A	B	C	D	E		
LPV DA	1298/50		250	(300-1)			
LNAV/VNAV DA*	1479/50		431	(500-1)			
LNAV MDA**	1580/50 532 (600-1)		1580/55	532	(600-1)		
CIRCLING***	1580-1 532 (600-1)		1660-1 612 (700-1 3/4)	1940-3 892 (900-3)		HIRL all Rws Rwy 13-31 ALS nstd	

OMAHA, NEBRASKA

41°07'N - 95°55'W

OFFUTT AFB (KOFF)

Amdt 1 22FEB24

RNAV (GPS) RWY 13

NC-2, 10 JUL 2025 to 07 AUG 2025

NC-2, 10 JUL 2025 to 07 AUG 2025