

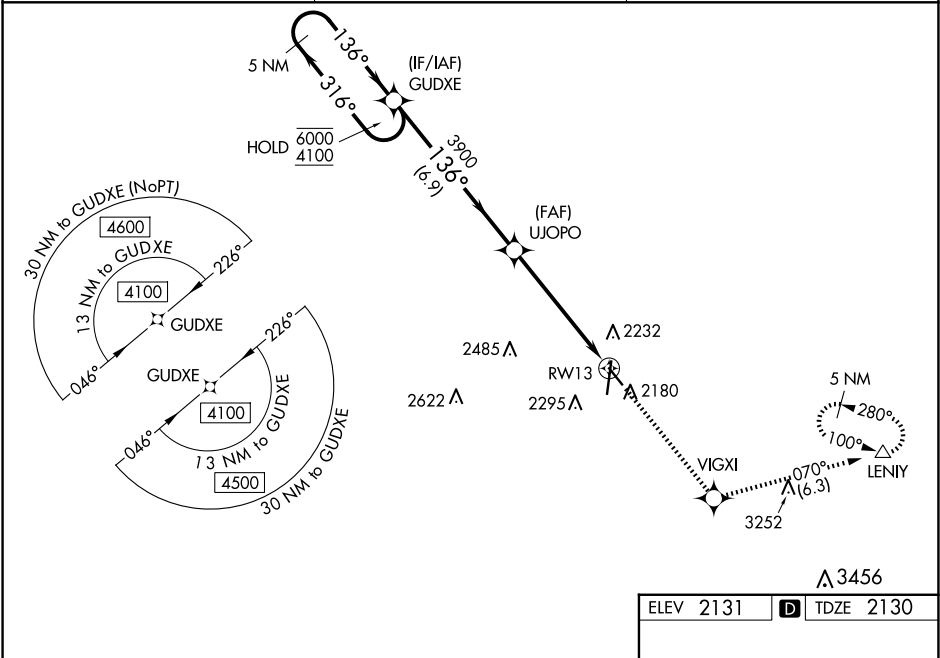
WAAS CH 65631 W13A	APP CRS 136°	Rwy Idg 4498 TDZE 2130 Apt Elev 2131
--	------------------------	---

RNAV (GPS) RWY 13

KEARNEY RGNL (E.A.R.)

RNP APCH.	<div><div><div>▼</div><div>▲</div></div><div>Baro-VNAV and VDP NA when using Holdrege altimeter setting. For uncompensated Baro-VNAV systems, LNAV/VNAV NA below -23°C or above 54°C. When local altimeter setting not received, use Holdrege altimeter setting: increase LPV DA to 2407 feet and all Cats visibility 3⁄8 SM; increase LNAV/VNAV DA to 2457 feet and all Cats visibility 3⁄8 SM and all MDAs 80 feet; increase visibility LNAV and Circling Cat C 1⁄8 SM.</div></div>	MISSED APPROACH: Climb to 4300 direct VIGXI and on track 070° to LENIY and hold.
-----------	---	--

AWOS-3PT 123.875	MINNEAPOLIS CENTER 119.4 278.8	UNICOM 123.0 (CTAF) 0
----------------------------	--	---------------------------------



5 NM Holding Pattern		VGSI and RNAV glidepath not coincident (VGSI Angle 3.00/TCH 43).		4300 ↑	VIGXI ✦	tr 070°	LENIY △
GUDXE		UJOPO					
6000 4100	← 316° → 136°	136°	3900	*LNAV only			
GP 3.00° TCH 43			3900	*1.5 NM to RW13	RW13		
		6.9 NM	3.9 NM	1.5 NM			
CATEGORY	A	B	C	D			
LPV DA	2330- ³ / ₄ 200 (200- ³ / ₄)			NA			
LNAV/ VNAV DA	2380- ³ / ₄ 250 (300- ³ / ₄)			NA			
LNAV MDA	2720-1	590 (600-1)	2720-1 ³ / ₄ 590 (600-1 ³ / ₄)	NA			
C CIRCLING	2720-1	589 (600-1)	2720-1 ³ / ₄ 589 (600-1 ³ / ₄)	NA			

