

LOC I-JLN <b><u>110.3</u></b>	APP CRS <b>134°</b>	Rwy Idg <b>5813</b> TDZE <b>970</b> Apt Elev <b>978</b>
----------------------------------	------------------------	---

ILS or LOC RWY 13  
JOPLIN RGNL (JLN)

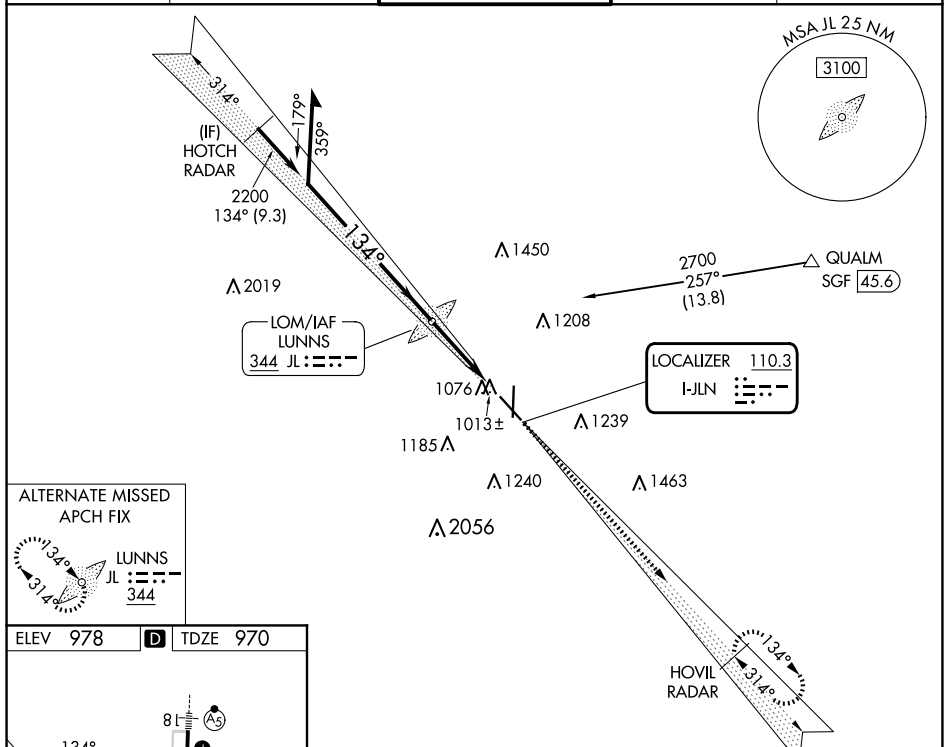
ADF required for LOC only. RADAR required.

<b>T</b>	Autopilot coupled approach NA below 1147.
<b>A</b>	Inop table does not apply to S-ILS 13 all Cats. MALSF (NSTD) 1368'.

MALSF

MISSED APPROACH: Climb to 3100 on I-JLN LOC localizer course southeast to HOVIL/RADAR and hold.

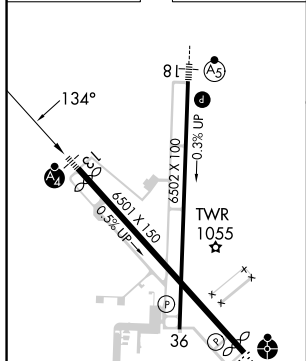
ATIS <b>120.85</b>	KANSAS CITY CENTER <b>128.6 282.325</b>	JOPLIN TOWER* <b>119.8 (CTAF) 0</b>	GND CON <b>121.6</b>	UNICOM <b>122.95</b>
-----------------------	--	--	-------------------------	-------------------------



ALTERNATE MISSED  
APCH FIX



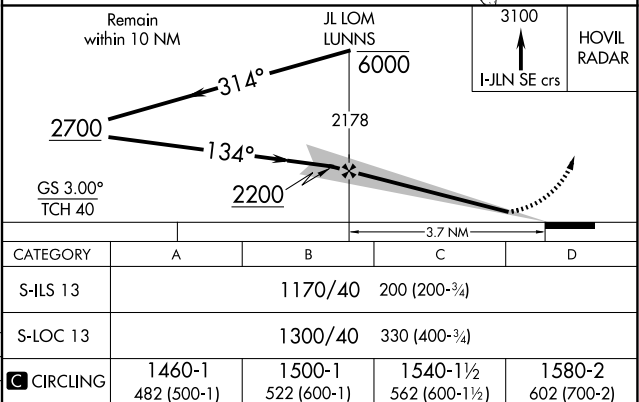
ELEV 978	<b>D</b>	TDZE 970
----------	----------	----------



HIRL Rwy 13-31 **L**  
HIRL Rwy 18-36

FAF to MAP 3.7 NM

Knots	60	90	120	150	180
Min:Sec	3:42	2:28	1:51	1:29	1:14



JOPLIN, MISSOURI  
Amdt 1A 14JUL22

37°09'N-94°30'W

JOPLIN RGNL (JLN)

## ILS or LOC RWY 13

NC-3, 10 JUL 2025 to 07 AUG 2025