

| | | |
|--|------------------------|---|
| WAAS CH 58234 W17A | APP CRS 174° | Rwy Idg TDZE 1481 Apt Elev 1481 |
|--|------------------------|---|

RNAV (GPS) RWY 17

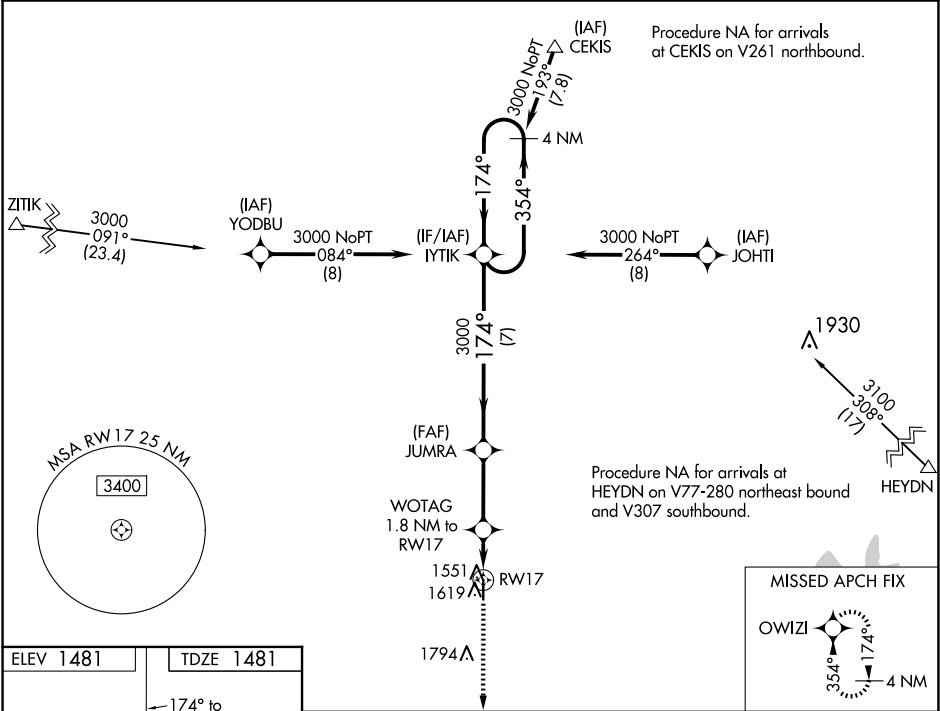
HERINGTON RGNL (HRU)

NA

Baro-VNAV NA. Use Manhattan altimeter setting; when not received, use Salina altimeter setting.
DME/DME RNP-0.3 NA.

MISSED APPROACH: Climb to 3100 direct OWIZI and hold.

| | | |
|----------------------------|---|------------------------|
| MHK ASOS 119.075 | KANSAS CITY CENTER 127.35 257.975 | CTAF 122.9 0 |
|----------------------------|---|------------------------|



ELEV 1481

TDZE 1481

174° to RW17

35

4184 X 75

REIL Rwys 17 and 35 0

MIRL Rwy 17-35 0

| | | | | |
|-----------------|----------------------|-------------|-------------------------|-------------------------|
| 3100 | OWIZI | JUMRA | IYTIK | 4 NM Holding Pattern |
| *LNAV only. | WOTAG 1.8 NM to RW17 | 3000 | 3000 | 354° 174° 3000 |
| RW17 | 2080* | 1.8 NM | 2.9 NM | 7 NM |
| GP 3.00° TCH 40 | | | | |
| CATEGORY | A | B | C | D |
| LPV DA | | 1853-1¼ | 372 (400-1¼) | |
| LNAV/VNAV DA | | 1853-1¼ | 372 (400-1¼) | |
| LNAV MDA | 1940-1 | 459 (500-1) | 1940-1⅔ | 459 (500-1⅔) |
| CIRCLING | 2060-1 | 579 (600-1) | 2280-2¼ 799 (800-2¼) | 2280-2½ 799 (800-2½) |

NC-2, 10 JUL 2025 to 07 AUG 2025

NC-2, 10 JUL 2025 to 07 AUG 2025