
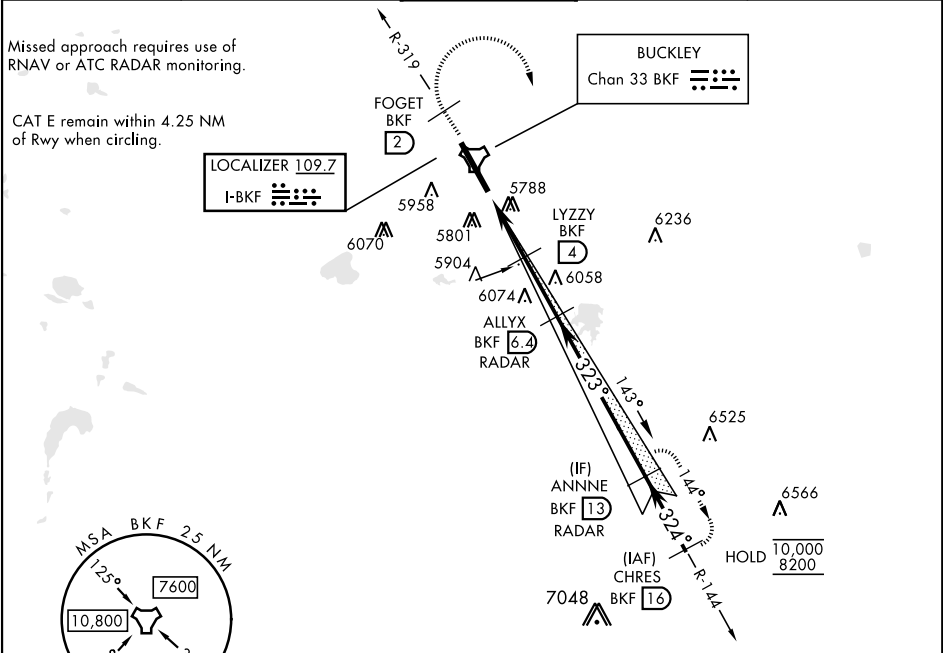


ILS or LOC/DME RWY 32

LOC I-BKF 109.7	APCH CRS 323°	Rwy Idg 11,006 TDZE 5663 Arpt Elev 5663	AL-538 [USAF]	BUCKLEY SFB (KBKF)
* When ALS inop, increase RVR to 40 and vis to ¾ miles. ** When ALS inop, increase CAT AB RVR to 55 and vis to 1 mile, CAT CDE vis to 1¾ miles. *** Circling NA East of Rwy 14-32.			ALSF-1 	MISSED APPROACH: Climb on BKF TACAN R-319 to FOGET, then climbing right turn to 8200 and intercept BKF R-144 to ANNNE and hold or as directed by ATC.

ATIS ★ 119.675 259.3	DENVER APP CON 128.45 251.075	TOWER ★ 121.0 291.675	GND CON 121.6 275.8	CLNC DEL 121.6 275.8
--------------------------------	---	---------------------------------	-------------------------------	--------------------------------



EMERG SAFE ALT 100 NM 16,500

8200 BKF R-319	FOGET	ANNNE
------------------------------------	--------------	--------------

TACAN

HIPER
1.7

3
↓

LYZZY
4

ALLYX
6.4
RADAR

ANNNE
13
RADAR

CHRES
16
8100

6600

7400

8000

0.5 NM 2.3 NM 2.4 NM

GS 3.00°
TCH 45°

CATEGORY	A	B	C	D	E
S-ILS 32 *	5863/24		200	(200-½)	
S-LOC 32 **	6280/24 617 (700-½)		6280-1¾ 617 (700-1¾)		
*** 	6280-1 617 (700-1)		6360-2 697 (700-2)	6400-2¼ 737 (800-2¼)	6420-2¾ 757 (800-2¾)
	HIRL Rwy 14-32 REIL Rwy 14				

ELEV 5663
TDZE 5663

5714
 5846

5700
 5614

5708
 5694

323° 5.2 NM
from FAF

ILS or LOC/DME RWY 32

SW-1, 10 JUL 2025 to 07 AUG 2025

SW-1, 10 JUL 2025 to 07 AUG 2025