

## HI-TACAN RWY 14

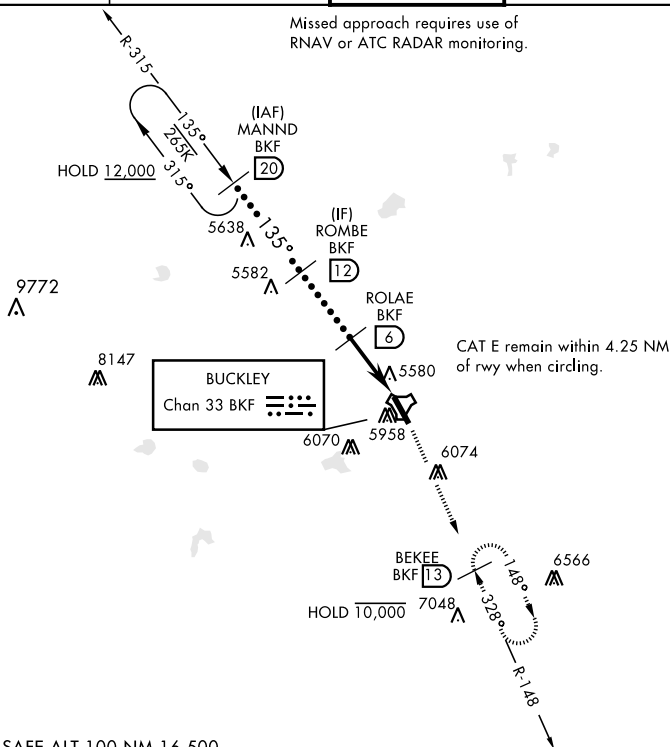
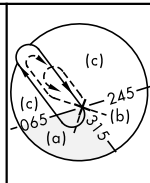
TACAN BKF Chan <b>33</b>	APCH CRS <b>135°</b>	Rwy Idg <b>11,006</b> TDZE <b>5592</b> Arpt Elev <b>5663</b>	AL-538 [USAF]	BUCKLEY SFB (KBKF)
-----------------------------	-------------------------	--	---------------	--------------------

\* Circling NA East of Rwy 14-32.

**MISSED APPROACH:** Climb to 8200 on BKF TACAN R-148 to BEKEE and hold or as directed by ATC.

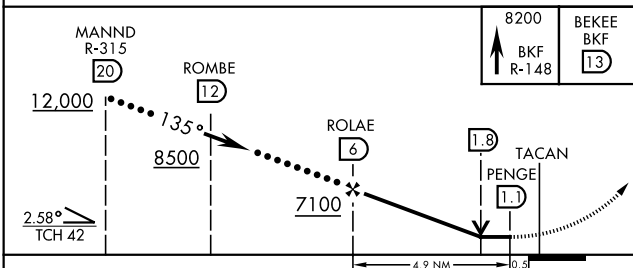
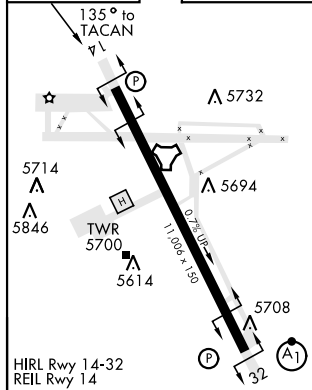
ATIS ★ 119.675 259.3	DENVER APP CON 128.45 251.075	TOWER ★ 121.0 291.675	GND CON 121.6 275.8	CLNC DEL 121.6 275.8
-------------------------	----------------------------------	--------------------------	------------------------	-------------------------

Missed approach requires use of RNAV or ATC RADAR monitoring.



EMERG SAFE ALT 100 NM 16,500

ELEV 5663		TDZE 5592
-----------	--	-----------



CATEGORY	C	D	E
S-14	5940-1 348 (300-1)		
<b>C</b> CIRCLING*	6360-2 697 (700-2)	6400-2¼ 737 (800-2¼)	6420-2¾ 757 (800-2¾)

AURORA, COLORADO

39°42'N-104°45'W

BUCKLEY SFB (KBKF)

## HI-TACAN RWY 14

Amdt 3 27APR17

SW-1, 10 JUL 2025 to 07 AUG 2025