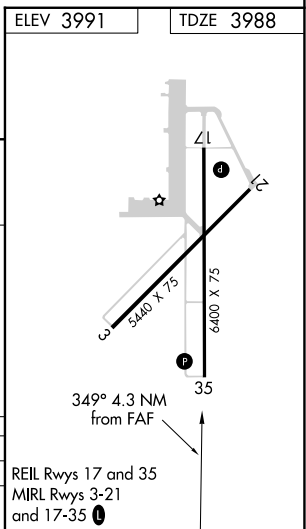


VOR/DME RWY 35  
DALHART MUNI (DHT)

**MISSED APPROACH:** Climb to 5700  
direct DHT VORTAC and hold.

## DME REQUIRED



VGSI and descent angles not coincident (VGSI Angle 3.00/TCH 39).

CATEGORY	A	B	C	D
S-35	4440-1	452 (500-1)	4440-1 $\frac{3}{8}$	452 (500-1 $\frac{3}{8}$ )
<b>C</b> CIRCLING	4440-1 449 (500-1)	4660-1 669 (700-1)	4660-1 $\frac{3}{4}$ 669 (700-1 $\frac{3}{4}$ )	4660-2 669 (700-2)

SC-2, 10 JUL 2025 to 07 AUG 2025

SC-2, 10 JUL 2025 to 07 AUG 2025