

WAAS CH 56355 W35A	APP CRS 351°	Rwy Idg TDZE 3988 Apt Elev 3991
--	------------------------	---

RNAV (GPS) RWY 35

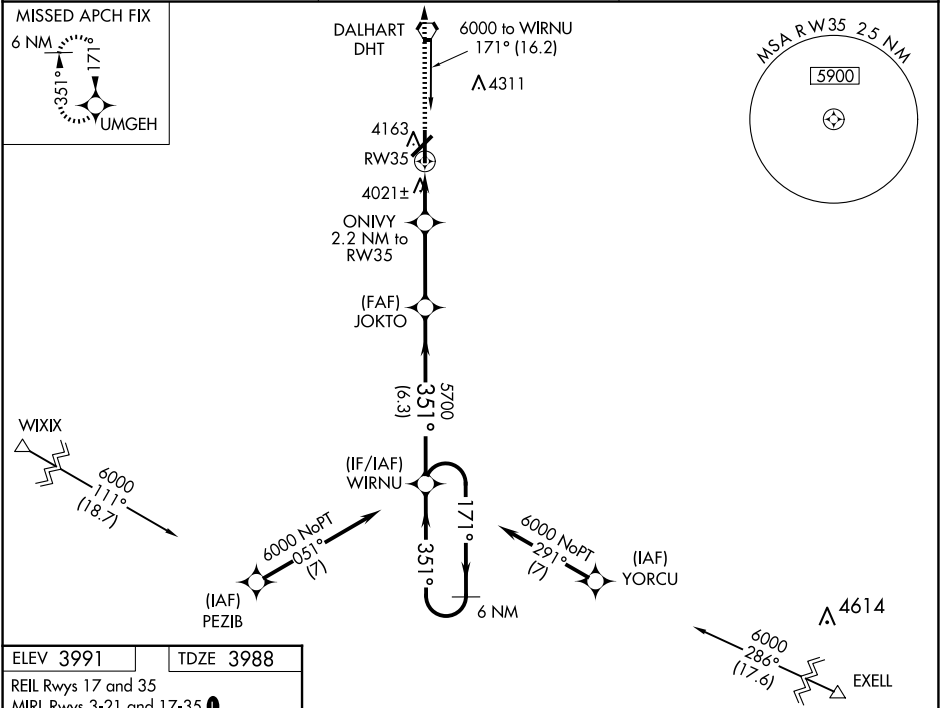
DALHART MUNI (DHT)

▼

Circling NA west of Rwy 17-35. DME/DME RNP-0.3 NA.
For uncompensated Baro-VNAV systems, LNAV/VNAV
NA below -16°C (4°F) or above 52°C (126°F).

MISSED APPROACH: Climb to
6000 direct UMGEH and hold.

ASOS 134.075	ALBUQUERQUE CENTER 127.85 285.475	UNICOM 122.95 (CTAF) 0
------------------------	---	----------------------------------



6 NM

Holding Pattern

WIRNU

6000

← 171°

351° →

GP 3.00°

TCH 45

VGSI and RNAV glidepath not coincident

(VGSI Angle 3.00/TCH 39).

6000

UMGEH

↑

6000

UMGEH

*LNAV only

JOKTO

5700

ONIVY

2.2 NM to RW35

*0.8 NM to RW35

RW35

351°

5700

*4720

6.3 NM

3 NM

1.4

0.8

CATEGORY	A	B	C	D
LPV DA	4238-¾ 250 (300-¾)			
LNAV/VNAV DA	4250-⅞ 262 (300-⅞)			
LNAV MDA	4280-1 292 (300-1)			
Ⓢ CIRCLING	4380-1 389 (400-1)	4660-1 669 (700-1)	4660-1¾ 669 (700-1¾)	4660-2 669 (700-2)

SC-2, 10 JUL 2025 to 07 AUG 2025

SC-2, 10 JUL 2025 to 07 AUG 2025