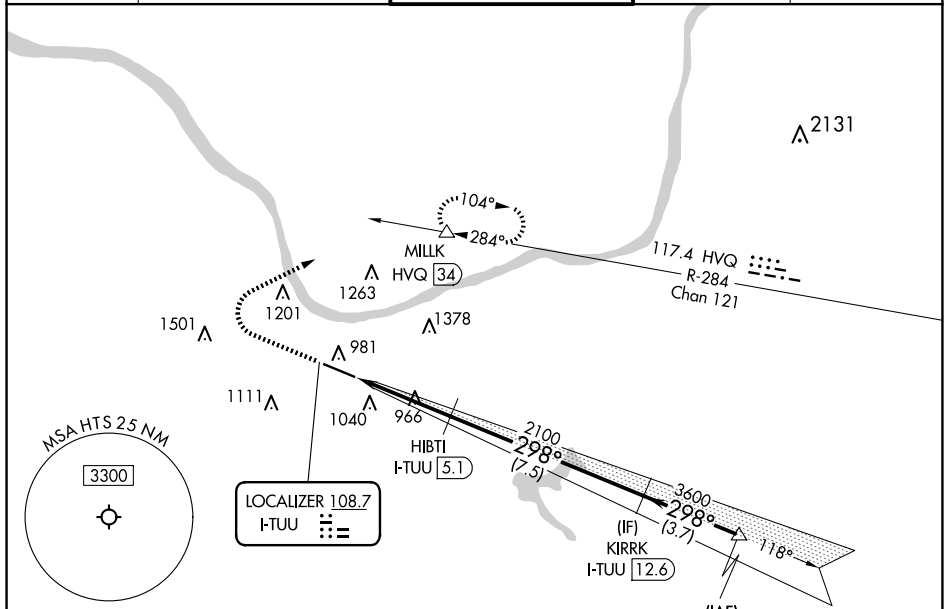


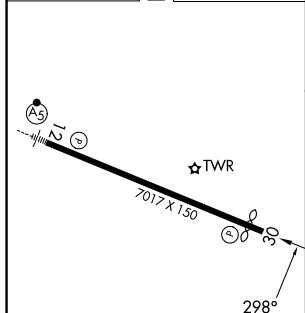
ILS or LOC RWY 30  
TRI-STATE/MILTON J FERGUSON FLD (HTS)

**MISSED APPROACH:** Climb to 1300 then climbing right turn to 4000 heading 055° and on HVQ VOR/DME R-284 to MILK/HVQ 34 DME and hold, continue climb-in-hold to 4000.

ATIS 125.2	HUNTINGTON APP CON 119.75 270.1	HUNTINGTON TOWER 118,5 270.1	GND CON 121.9	CLNC DEL 118.05
---------------	------------------------------------	---------------------------------	------------------	--------------------



ELEV 828	<b>D</b>	TDZE 828
----------	----------	----------



REIL Rwy 30  
HIRL Rwy 12-30

FAF to MAP 3.8 NM

Knots	60	90	120	150	180
Min:Sec	3:48	2:32	1:54	1:31	1:16

