

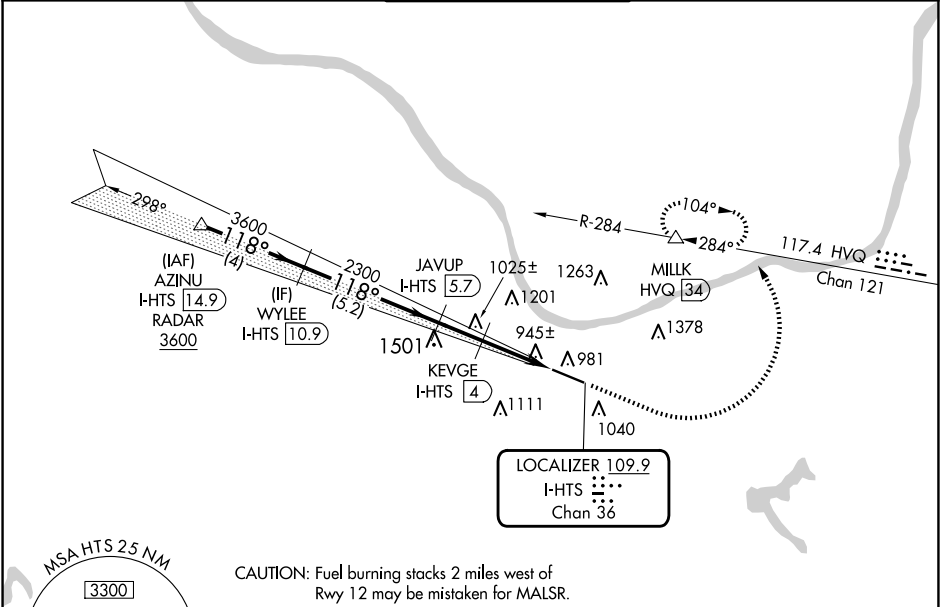
LOC/DME I-HTS	APP CRS	Rwy Ldg	6516
<b>109.9</b>	<b>118°</b>	TDZE	<b>828</b>
Chan 36		Apt Elev	<b>828</b>

ILS or LOC RWY 12

TRI-STATE/MILTON J FERGUSON FLD (HTS)

DME required. RADAR required for procedure entry.	MALSRL	MISSED APPROACH: Climb to 2800 then climbing left turn to 4000 on heading 005° and HVQ VOR/DME R-284 to MILK/HVQ VOR/DME 34 DME and hold, continue to climb-in-hold to 4000.
For inop ALS, increase S-LOC 12 Cats C and D visibility to RVR 5500. *RVR 1800 authorized with use of FD or AP or HUD to DA.		

ATIS	HUNTINGTON APP CON	HUNTINGTON TOWER	GND CON	CLNC DEL
<b>125.2</b>	<b>119.75 270.1</b>	<b>118.5 270.1</b>	<b>121.9</b>	<b>118.05</b>



		CAUTION: Fuel burning stacks 2 miles west of Rwy 12 may be mistaken for MALSRL.		ELEV 828 <b>D</b> TDZE 828	
AZINU I-HTS 14.9 RADAR 3600	WYLEE I-HTS 10.9	JAVUP I-HTS 5.7	2800 4000 hdg 005°	HVQ R-284	MILK
3600 118° 3600		2300	KEVGE I-HTS 4	I-HTS 2.2	I-HTS 1.3
GS 3.00° TCH 56		1760			
4 NM		5.2 NM	1.7 NM	1.8 NM	1 NM
CATEGORY	A	B	C	D	
S-ILS 12*	1028/24 200 (200-½)				
S-LOC 12	1200/24	372 (400-½)	1200/35	372 (400-⅝)	
CIRCLING	1300-1 472 (500-1)	1380-1 552 (600-1)	1520-2 692 (700-2)	1740-3 912 (1000-2)	
				REIL Rwy 30 HIRL Rwy 12-30	