

WAAS CH 56530 W08A	APP CRS 076°	Rwy Idg TDZE Apt Elev	3953 3942 3942
--	------------------------	-----------------------------	---

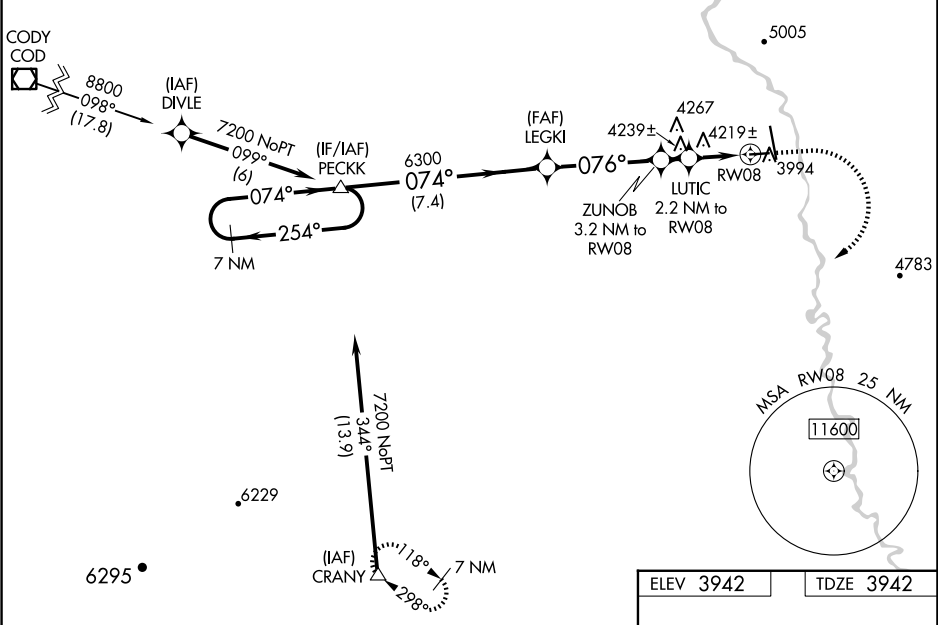
RNAV (GPS) RWY 8

SOUTH BIG HORN COUNTY (GEY)

DME/DME RNP-0.3 NA. Straight-in minimums NA at night. When local altimeter setting not received use Cowley/Lovell/Byron altimeter setting: increase LPV DA to 4279 feet and LNAV/VNAV DA to 4654 feet. Increase LPV visibility, all Cts 1/8 SM; increase all MDA 100 feet and LNAV Cts C/D visibility 1/8 SM. Rwy 8 helicopter visibility reduction below 3/4 SM NA. Baro-VNAV and VDP NA when using Cowley/Lovell/Byron altimeter setting. For uncompensated Baro-VNAV systems, LNAV/VNAV NA below -26°C (-14°F) or above 51°C (124°F).

MISSED APPROACH: Climb to 4400 then climbing right turn to 9000 direct CRANY and hold, continue climb-in-hold to 9000.

ASOS 135.325	SALT LAKE CENTER 127.75 351.9	CTAF 122.9
------------------------	---	----------------------



--	--

