

WAAS CH 77542 W34A	APP CRS 339°	Rwy Idg TDZE Apt Elev	7003 3916 3942
--	------------------------	-----------------------------	---

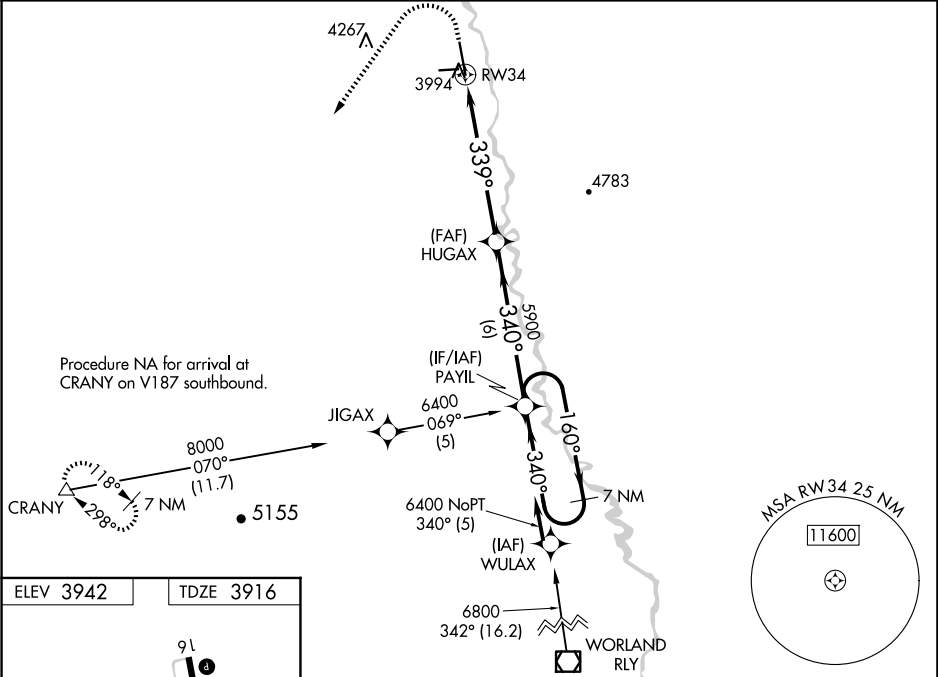
RNAV (GPS) RWY 34

SOUTH BIG HORN COUNTY (GEY)

Baro-VNAV NA when using Cowley/Lovell/Byron altimeter setting. For uncompensated Baro-VNAV systems, LNAV/VNAV NA below -26°C (-14°F) or above 51°C (124°F). DME/DME RNP-0.3 NA. When local altimeter setting not received, use Cowley/Lovell/Byron altimeter setting and increase LPV DA to 4253 feet and LNAV/VNAV DA to 4327 feet. Increase LPV and LNAV/VNAV visibility all Cats ¾ SM. Increase all MDAs 100 feet and LNAV visibility Cat B ¼ SM, Cats C/D ½ SM and Circling Cat B ¼ SM. VDP NA with Cowley/Lovell/Byron altimeter setting.

MISSED APPROACH: Climb to 4400 then climbing left turn to 9000 direct CRANY and hold, continue climb-in-hold 9000.

ASOS 135.325	SALT LAKE CENTER 127.75 351.9	CTAF 122.9
------------------------	---	----------------------



ELEV 3942

TDZE 3916

	4400	9000	CRANY				
	↑	↶	△				
	* LNAV only.			* 2.1 NM to RW34			
CATEGORY	A		B		C		D
LPV DA	4166-¾		250 (300-¾)				
LNAV/VNAV DA	4240-1		324 (300-1)				
LNAV MDA	4640-1 724 (700-1)		4640-2 724 (700-2)				
CIRCLING	4640-1 698 (700-1)	4700-1¼ 758 (800-1¼)	5320-3 1378 (1400-3)	5460-3 1518 (1600-3)			