

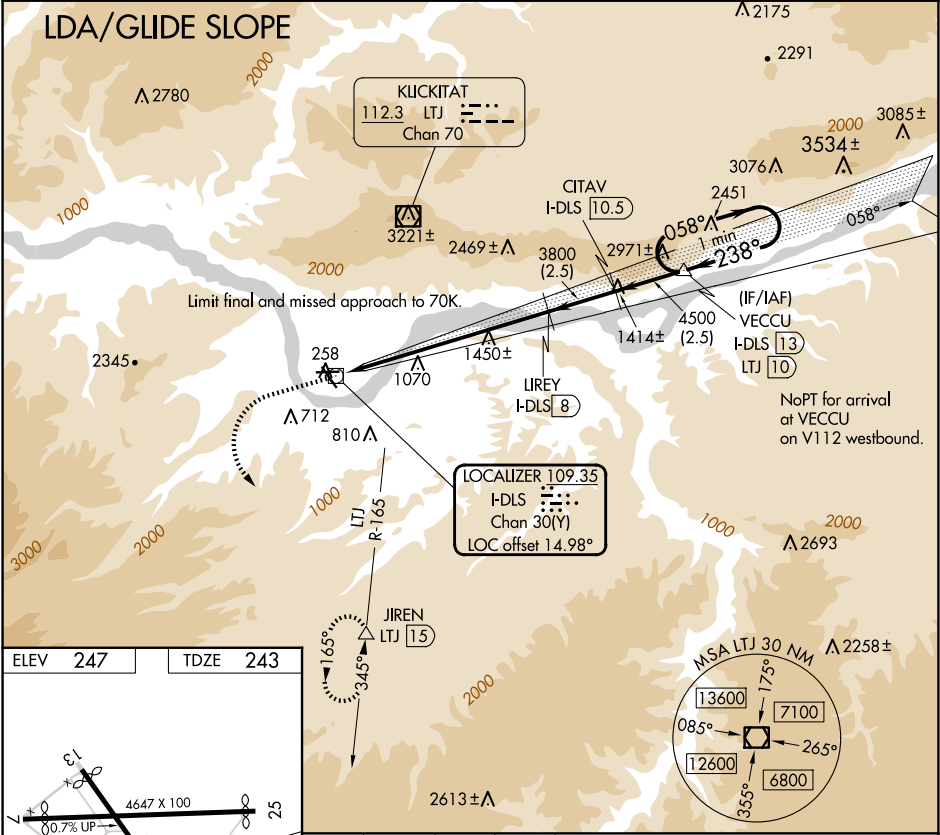
LOC/DME I-DLS	APP CRS	Rwy Idg	4451
109.35	238°	TDZE	243
Chan 30(Y)		Apt Elev	247

COPTER LDA/DME RWY 25

COLUMBIA GORGE RGNL/THE DALLES MUNI(DLS)

<div><div>When local altimeter setting not received, procedure NA.</div><div><div>NA</div><div>Glide slope provided by standard glide slope equipment.</div></div></div>	MISSED APPROACH: Climb to 1200 then climbing left turn to 7000 on heading 125° and LTJ VOR/DME R-165 to JIREN/LTJ 15 DME and hold, continue climb-in-hold to 7000.
--------------------------------------------------------------------------------------------------------------------------------------------------------------------------	--------------------------------------------------------------------------------------------------------------------------------------------------------------------

ASOS 135.175	SEATTLE CENTER 119.65 257.6	UNICOM 123.0 (CTAF) 0
-----------------	--------------------------------	--------------------------



ELEV 247	TDZE 243	1200	7000	LTJ	JIREN	Use I-DLS DME when on the localizer course.	VECCU I-DLS 13	One Minute Holding Pattern
		hdg 125°	R-165					
REIL Rwy 31 0		COLUMBIA GORGE RGNL/THE DALLES MUNI(DLS)						
MIRL Rwy 7-25 and 13-31 0		COPTER LDA/DME RWY 25						
		GS 4.20° HCH 43						
		7.9 NM 2.5 NM 2.5 NM						
CATEGORY		COPTER						
H-25		783-1½ 540 (600-1½)						