

VORTAC TRM <b>116.2</b> Chan <b>109</b>	APP CRS <b>307°</b>	Rwy Idg TDZE Apt Elev	<b>N/A</b> <b>N/A</b> <b>-115</b>
---	------------------------	-----------------------------	---

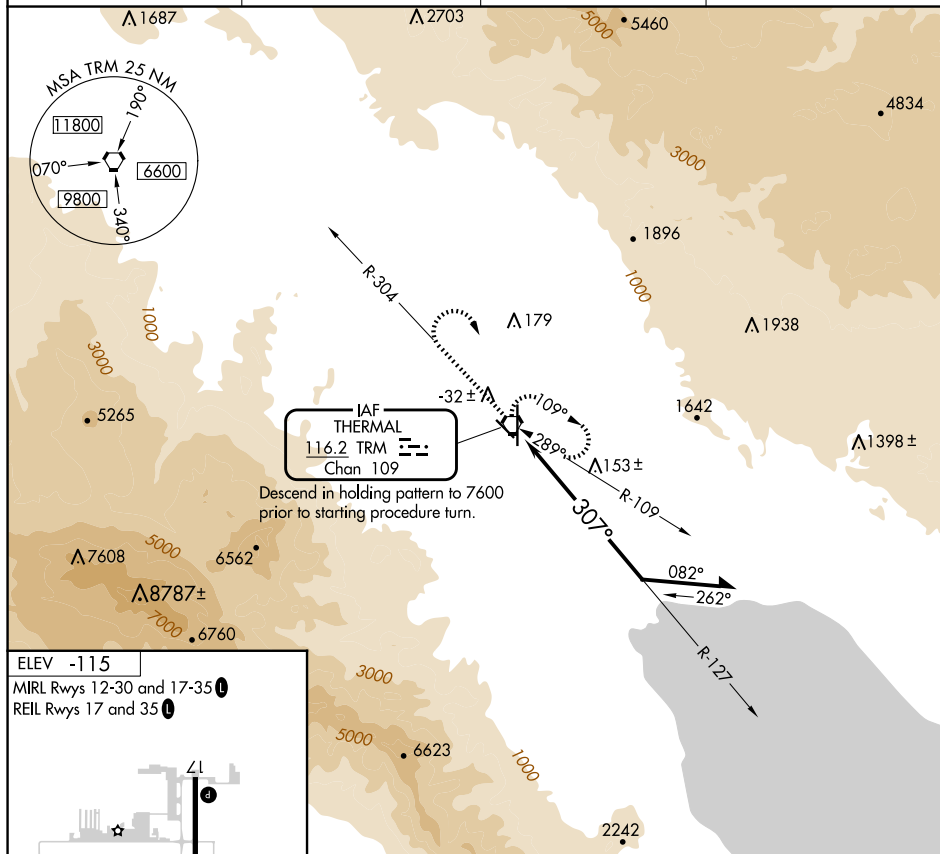
VOR-A

JACQUELINE COCHRAN RGNL (TRM)

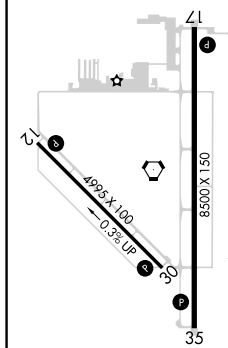


**MISSED APPROACH:** Climb to 2000 on TRM VORTAC R-304 then climbing right turn to 5400 direct TRM VORTAC and hold, continue climb-in-hold to 5400.

ASOS <b>118.325</b>	SOCAL APP CON <b>135.275 251,1</b>	CLNC DEL <b>120.225</b>	UNICOM <b>123.0 (CTAF) 0</b>
------------------------	---------------------------------------	----------------------------	---------------------------------



ELEV -115	
MIRL Rwy 12-30 and 17-35	L
REIL Rwy 17 and 35	L



The diagram illustrates a VORTAC station. On the left, a table lists the frequencies and symbols for the associated signals:

2000 ↑ TRM R-304	5400 ↻	TRM ⬡
------------------------	-----------	----------

On the right, a VORTAC station is shown with the label "TRM VORTAC". Two radial lines extend from the station, labeled with their bearings: "127°" and "307°". A note "Remain within 10 NM" is placed near the 127° line. The frequency "2900" is indicated at the end of the 307° line.

CATEGORY	A	B	C	D
<b>C</b> CIRCLING	1400-1¼ 1515 (1600-1¼)	1400-1½ 1515 (1600-1½)	1400-3	1515 (1600-3)