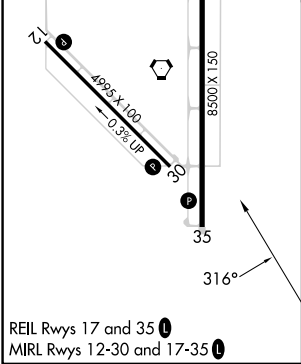
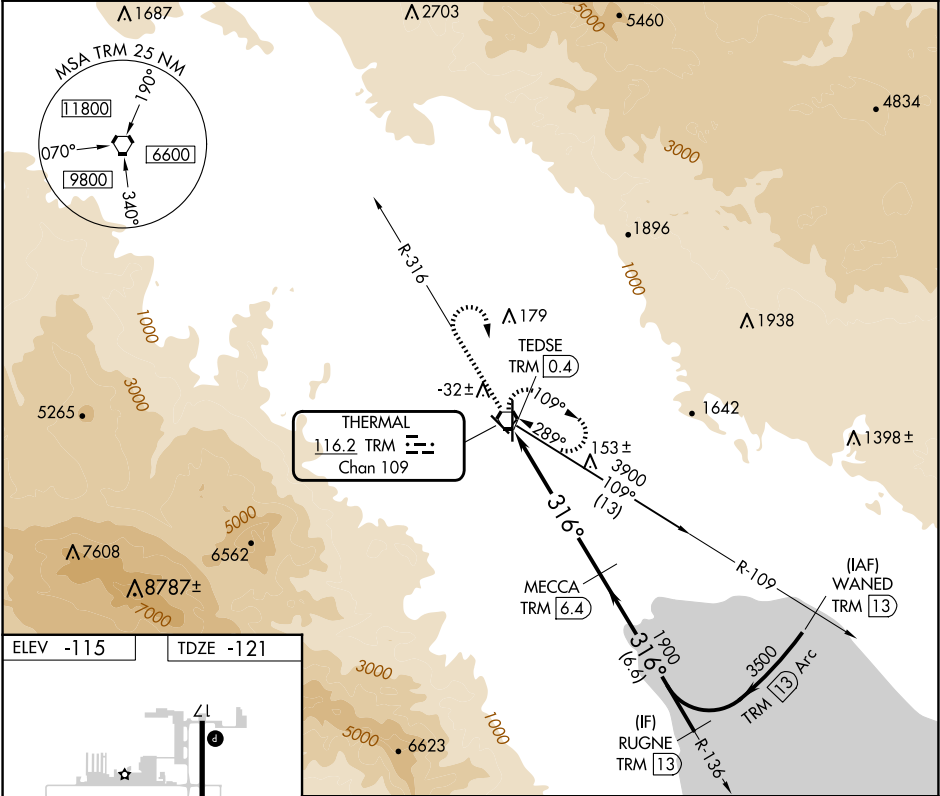




VORTAC TRM	APP CRS	Rwy Idg	4995
116.2	316°	TDZE	-121
Chan 109		Apt Elev	-115

VOR RWY 30

JACQUELINE COCHRAN RGNL (TRM)

DME required.		MISSED APPROACH: Climb to 1300 on TRM VORTAC R-316 then climbing right turn to 5400 direct TRM VORTAC and hold, continue climb-in-hold to 5400.	
Rwy 30 helicopter visibility reduction below ¾ SM NA.			
ASOS	SOCAL APP CON	CLNC DEL	UNICOM
118.325	135.275 251.1	120.225	123.0 (CTAF) 0



<div><div>1300</div><div>↑</div><div>TRM R-316</div></div>		<div><div>5400</div><div></div><div>TRM</div></div>		VGSI and descent angles not coincident (VGSI Angle 3.00/TCH 25).					
<div><div>TRM VORTAC</div><div></div></div>		<div><div>TRM 1.7</div><div>↓</div></div>		<div><div>MECCA TRM 6.4</div><div>✱</div></div>		<div><div>RUGNE TRM 13</div><div>3500</div></div>			
<div><div>TEDSE TRM 0.4</div><div>→</div></div>		<div><div>1900</div><div>↘</div><div>316°</div></div>		<div><div>≤ 3.13°</div><div>TCH 45</div></div>					
<div><div>1.3</div><div>→</div></div>		<div><div>4.7 NM</div><div>→</div></div>		<div><div>6.6 NM</div><div>→</div></div>					
CATEGORY		A		B		C		D	
S-30		300-1		421 (500-1)		300-1¼		421 (500-1¼)	
CIRCLING		320-1		340-1		460-1½		780-3	
		435 (500-1)		455 (500-1)		575 (600-1½)		895 (900-3)	