

| | | | |
|--|------------------------|---|-------------|
| WAAS CH 69327 W33A | APP CRS 333° | Rwy Idg TDZE 108 Apt Elev 120 | 4999 |
|--|------------------------|---|-------------|

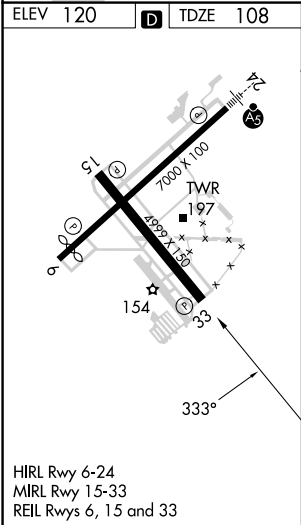
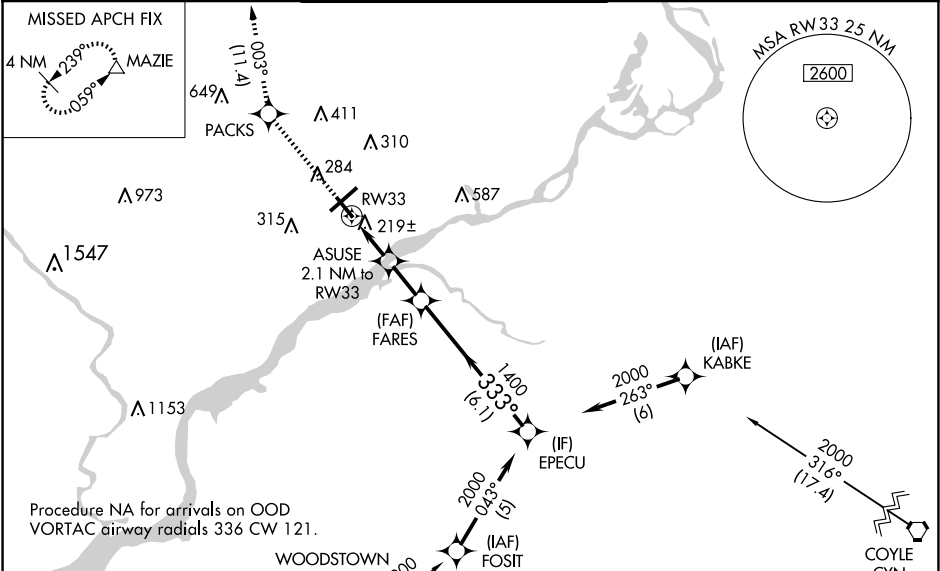
RNAV (GPS) RWY 33

NORTHEAST PHILADELPHIA (PNE)

Baro-VNAV NA when using Philadelphia Intl altimeter setting. For uncompensated Baro-VNAV systems, LNAV/VNAV NA below -15°C (5°F) or above 43°C (109°F). When local altimeter setting not received, use Philadelphia Intl altimeter setting: increase LPV DA to 430 feet and LNAV/VNAV DA to 450 feet and all LPV and LNAV/VNAV visibilities ¼ SM; increase all MDAs 60 feet and LNAV visibility Cat C/D ¼ SM and Circling visibility Cat C/D ¼ SM. DME/DME RNP-0.3 NA.

MISSED APPROACH:
Climb to 2500 direct
PACKS and on track
003° to MAZIE and hold.

| | | | | | |
|-----------------------|--|---|-------------------------|---------------------------|-------------------------|
| ATIS 121.15 | PHILADELPHIA APP CON 123.8 291.7 | NORTHEAST PHILADELPHIA TOWER ★ 126.9 (CTAF) 0 278.8 | GND CON 121.7 | CLNC DEL 127.25 | UNICOM 122.95 |
|-----------------------|--|---|-------------------------|---------------------------|-------------------------|



| | | | | |
|----------------------|-------------------|-------------|------------------------|----------------------|
| 2500 | PACKS | MAZIE | FARES | EPECU |
| ↑ | tr 003° | △ | 1400 | 2000 |
| * LNAV only | | | | |
| ASUSE 2.1 NM to RW33 | | | | |
| RW33 | | | | |
| * 800 | | | | |
| 1400 | | | | |
| 333° | | | | |
| 2000 | | | | |
| GP 3.00° TCH 39 | | | | |
| 2.1 NM 1.8 NM 6.1 NM | | | | |
| CATEGORY | A | B | C | D |
| LPV DA | 380-1 272 (300-1) | | | |
| LNAV/VNAV DA | 400-1 292 (300-1) | | | |
| LNAV MDA | 480-1 372 (400-1) | | | |
| CIRCLING | 700-1 | 580 (600-1) | 720-1½ 600 (600-1½) | 780-2 660 (700-2) |