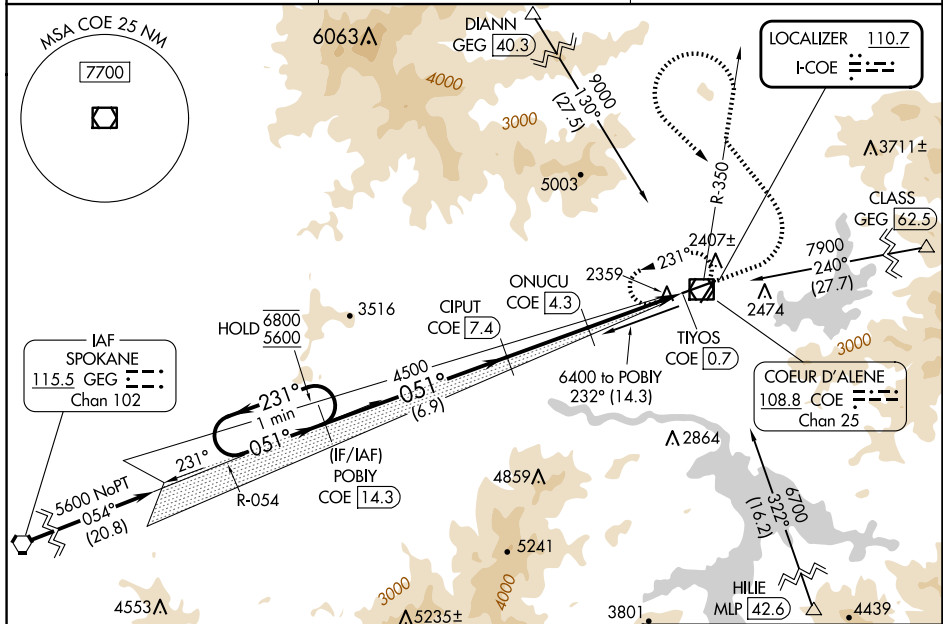



ILS or LOC RWY 6
COEUR D'ALENE/PAPPY BOYINGTON FLD (COE)

MISSED APPROACH: Climb to 2900 then climbing left turn to 6000 on COE R-350 outbound then climbing left turn to 6500 on COE R-350 inbound to COE VOR/DME and hold.

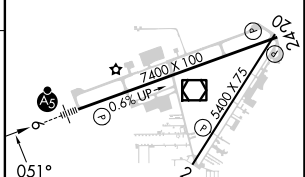
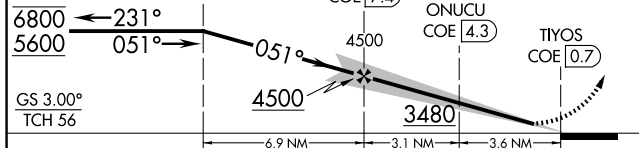
UNICOM
122.8 (CTAF) **L**



ELEV 2320	D	TDZE 2291
-----------	----------	-----------

2900 ↑	6000 ↖	COE R-350 outbnd	6500 ↖	COE R-350 inbnd	COE 
-----------	-----------	------------------------	-----------	-----------------------	--

POBIY
COE 14.3



CATEGORY	A	B	C	D
S-ILS 6	2491-1½ 200 (200-½)			
S-LOC 6	2860-1½ 569 (600-½)		2860-1 569 (600-1)	2860-1¼ 569 (600-1¼)
CIRCLING	2860-1 540 (600-1)	2880-1 560 (600-1)	3020-2 700 (700-2)	3180-2¾ 860 (900-2¾)

MIRL Rwy 2-20 **L**
HIRL Rwy 6-24 **L**
REIL Rwy 2 and 24 **L**