

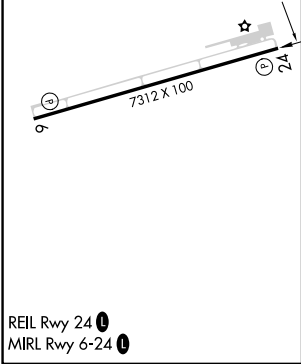
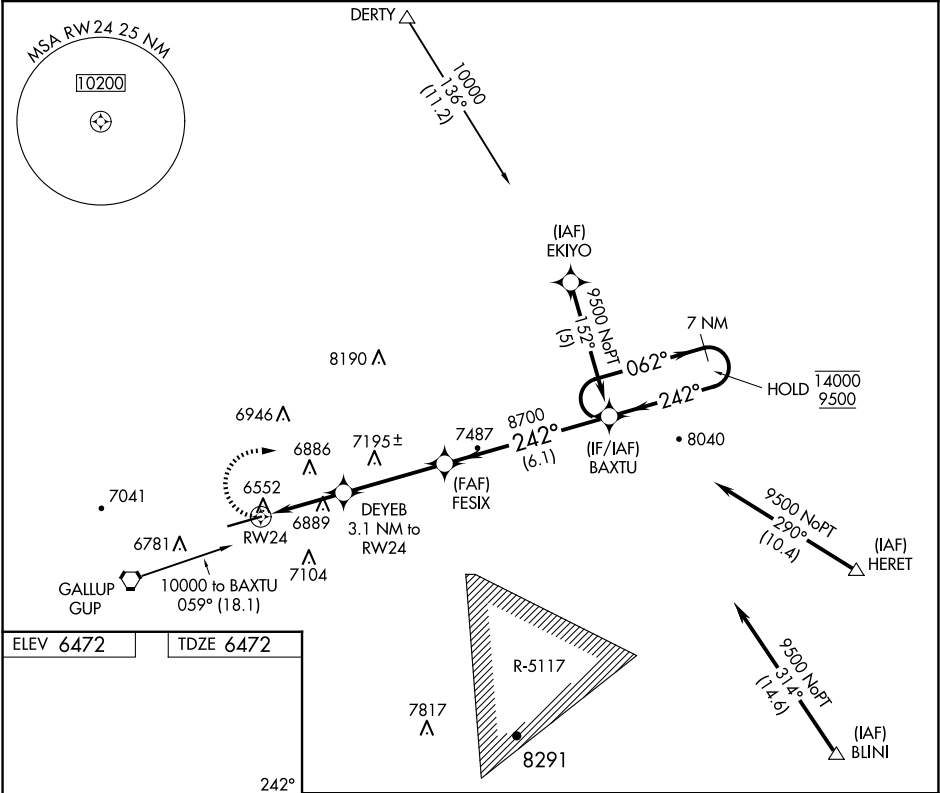
APP CRS	Rwy Ldg	7312
242°	TDZE	6472
	Apt Elev	6472

RNAV (GPS) RWY 24

GALLUP MUNI (GUP)

RNP APCH.	MISSED APPROACH: Climbing right turn to 9500 direct BAXTU and hold.
<div><div>▼</div><div>▲</div></div> Rwy 24 helicopter visibility reduction below ¾ SM NA.	

ASOS 118.375	ALBUQUERQUE CENTER 124.325 288.25	UNICOM 122.95 (CTAF) 0
-----------------	--------------------------------------	----------------------------------



9500	BAXTU	VGSI and descent angles not coincident (VGSI Angle 3.00/TCH 48).		7 NM
		DEYEB 3.1 NM to RW24		Holding Pattern
		FESIX		
		BAXTU		
		7500		
		8700		
		7360-2½		
		7720-3		
		988 (1000-3)		
		1248 (1300-3)		

SW-1, 10 JUL 2025 to 07 AUG 2025

SW-1, 10 JUL 2025 to 07 AUG 2025