

LOC/DME I-GUP 111.7 Chan 54	APP CRS 062°	Rwy Ldg 7312 TDZE 6465 Apt Elev 6472
---	------------------------	---

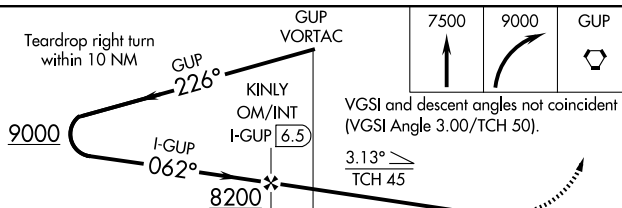
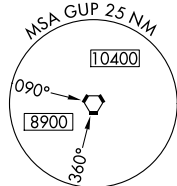
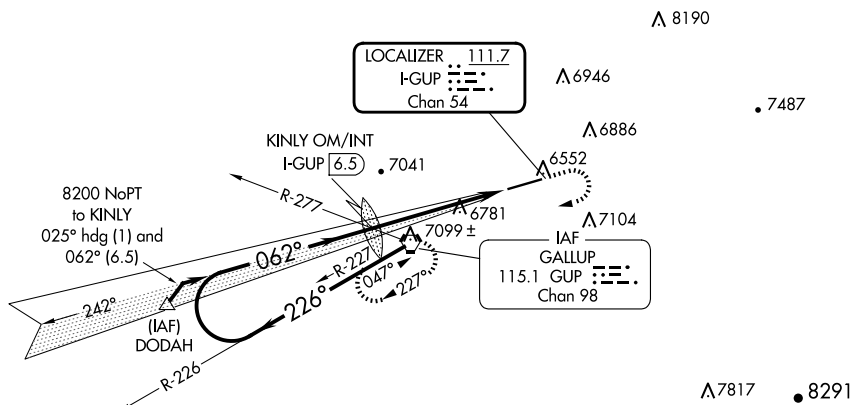
LOC RWY 6
GALLUP MUNI (GUP)



A NA Rwy 6 helicopter visibility reduction below $\frac{3}{4}$ SM NA.

MISSED APPROACH: Climb to 7500 then climbing right turn to 9000 direct GUP VORTAC and hold.

ASOS 118,375	ALBUQUERQUE CENTER 124.325 288.25	UNICOM 122.95 (CTAF) 0
------------------------	---	----------------------------------



ELEV 6472
TDZE 6465

Diagram illustrating the approach path for Runway 24. The runway length is 7312 x 100 feet. The glide slope is 6°. The heading is 062°. The distance from the Final Approach Fix (FAF) to the Map (MAP) is 5.1 NM.

FAF to MAP 5.1 NM					
Knots	60	90	120	150	180
Min:Sec	5:06	3:24	2:33	2:02	1:42