

WAAS CH <b>69611</b> <b>W17A</b>	APP CRS <b>168°</b>	Rwy Idg TDZE Apt Elev	<b>5000</b> <b>1135</b> <b>1166</b>
--	------------------------	-----------------------------	---

RNAV (GPS) RWY 17

EDWARD F KNAPP STATE (MPV)

RNP APCH - GPS.  
RADAR required for procedure entry at VUYUD.

⚠

⚠

🌡️ -20°C

Rwy 17 helicopter visibility reduction below 1 SM NA. Inop table does not apply to LPV all Cats and LNAV Cats A and B. Baro-VNAV NA. When local altimeter setting not received, procedure NA. Straight-in Rwy 17 NA at night, Circling Rwy 5, 17, 35 NA at night. For inop ALS, increase LNAV/VNAV all Cats visibility to 1 3⁄8 SM.

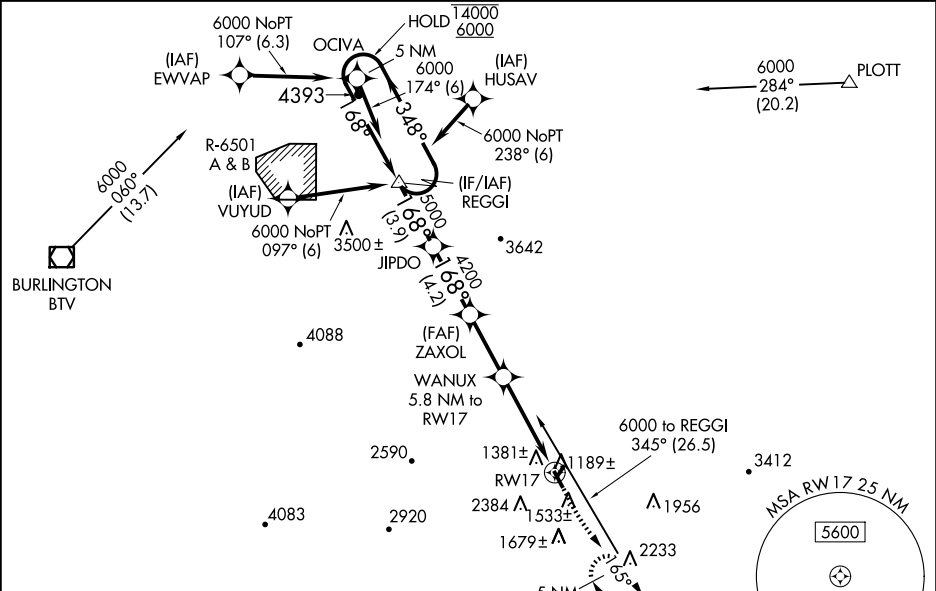
MALSR

⦿

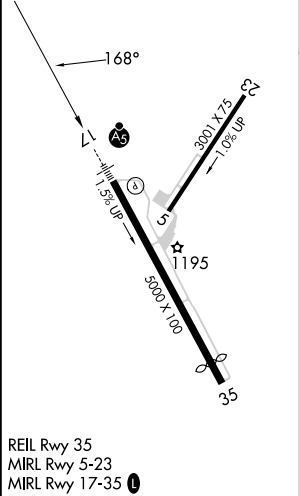
AS

MISSED APPROACH:  
Climb to 1720 then climb to 5200 direct MPV VOR/DME and hold, continue climb-in-hold to 5200.

ASOS <b>132.675</b>	BOSTON CENTER <b>135.7 282.2</b>	UNICOM <b>122.8 (CTAF) 0</b>
------------------------	-------------------------------------	---------------------------------



ELEV 1166	TDZE 1135
-----------	-----------



Procedure NA for arrival on MPV  
VOR/DME airway radials 315 CW 037.

5 NM Holding Pattern

REGGI

JIPDO

ZAXOL

WANUX 5.8 NM to RW17

RW17

14000 6000

GP 3.00° TCH 55

348° 168°

5000

4200 2980

3.9 NM 4.2 NM 3.8 NM 5.8 NM

CATEGORY	A	B	C	D
LPV DA	1509-1 374 (400-1)			
LNAV/VNAV DA	1624-1 489 (500-1)			
LNAV MDA	1680-1 545 (600-1)	1680-1 545 (600-1 1⁄8)		
CIRCLING	1980-1 814 (900-1 1⁄4)	2700-3 1534 (1600-3)		2920-3 1754 (1800-3)