

WAAS CH <b>69216</b> <b>W30A</b>	APP CRS <b>300°</b>	Rwy Idg TDZE <b>12</b> Apt Elev <b>15</b>	<b>6751</b>
--	------------------------	---	-------------

RNAV (GPS) RWY 30  
JACK BROOKS RGNL (BPT')

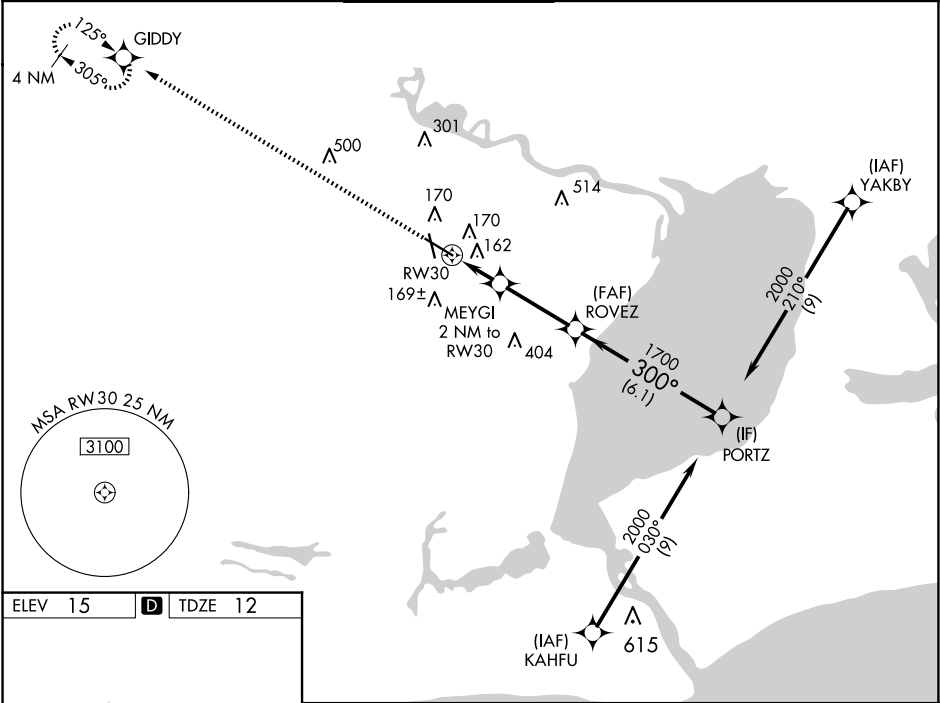
RNP APCH - GPS.

⚠

For uncompensated Baro-VNAV systems, LNAV/VNAV NA below -4°C or above 54°C. Rwy 30 helicopter visibility reduction below ¾ SM NA. Baro-VNAV and VDP NA when using Orange County altimeter setting. When local altimeter setting not received, use Orange County altimeter setting: increase LPV DA to 294 feet and all visibilities ½ SM. Increase LNAV/VNAV DA to 355 feet and all visibilities ½ SM. Increase all MDAs 40 feet and LNAV visibility Cat C/D/E ¼ SM.

MISSED APPROACH:  
Climb to 3100 direct GIDDY and hold, continue climb-in-hold to 3100.

ATIS <b>126.3</b>	HOUSTON APP CON <b>121.3 377.1</b>	BEAUMONT TOWER * <b>119.5 (CTAF)</b>	GND CON <b>124.85</b>	CLNC DEL <b>118.3</b>	UNICOM <b>122.95</b>
----------------------	---------------------------------------	---	--------------------------	--------------------------	-------------------------



ELEV 15 **D** TDZE 12

REIL Rws 16, 30 and 34 **0**  
HIRL Rws 12-30, 16-34 **0**

3100 GIDDY

CATEGORY	A	B	C	D	E
LPV DA	262-¾		250 (300-¾)		
LNAV/VNAV DA	323-7/8		311 (400-7/8)		
LNAV MDA	420-1	408 (500-1)	420-1½		408 (500-1½)

SC-5, 10 JUL 2025 to 07 AUG 2025

SC-5, 10 JUL 2025 to 07 AUG 2025