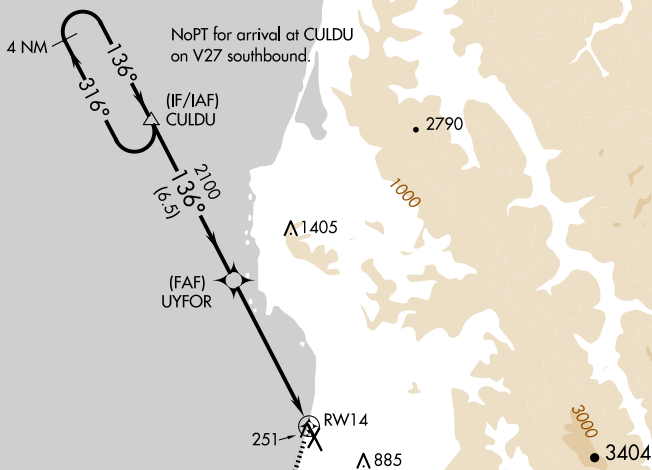
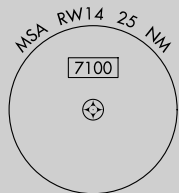


# RNAV (GPS) RWY 14

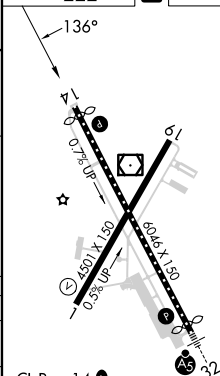
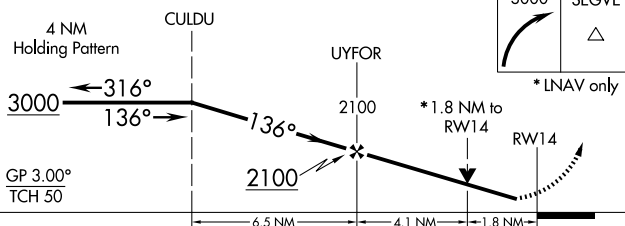
## CALIFORNIA REDWOOD COAST-HUMBOLDT COUNTY (ACV)

**MISSED APPROACH:**  
Climbing right turn to 3000  
direct SEGVE and hold.

UNICOM  
123.0 (CTAF) **L**



### MISSED APCH FIX



CL Rwy 14 **L**  
TDZ/CL Rwy 32 **L**  
MIRL Rwy 1-19  
HIRL Rwy 14-32 **L**  
REIL Rwy 14 **L**  
REIL Rwy 1

CALIFORNIA REDWOOD COAST-HUMBOLDT COUNTY (ACV)  
40°59'N-124°07'W      RNAV (GPS) RWY 14