

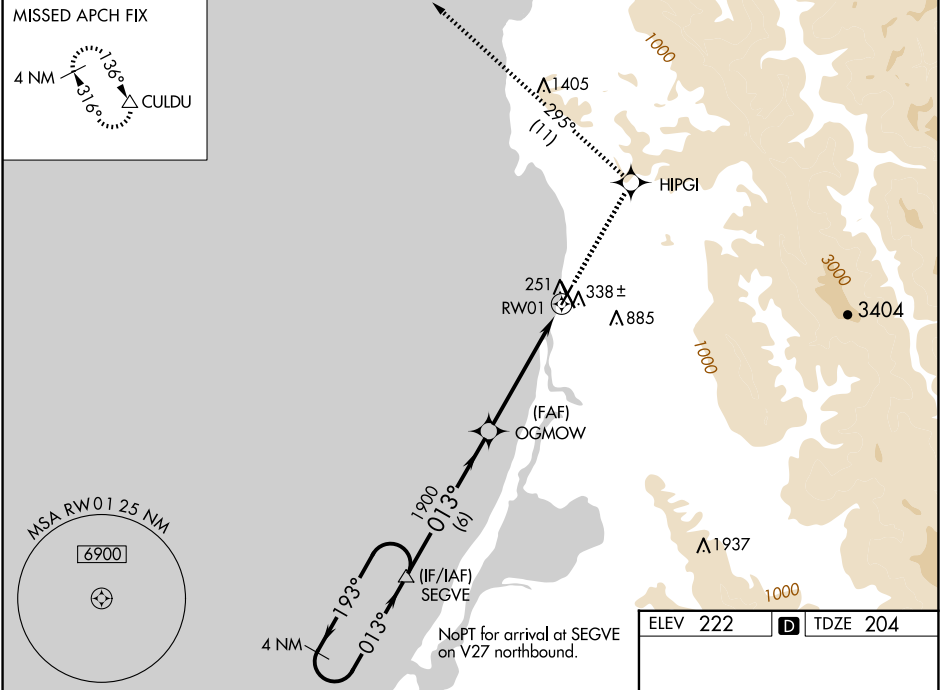
WAAS CH 63200 W01A	APP CRS 013°	Rwy Idg TDZE 204 Apt Elev 222	4501
--	------------------------	---	-------------

RNAV (GPS) RWY 1

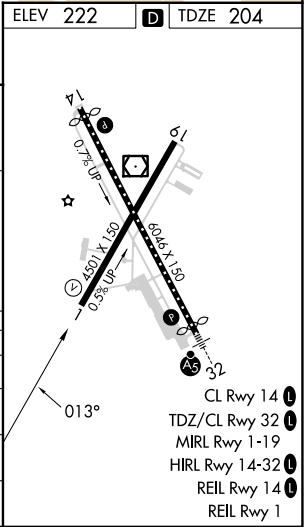
CALIFORNIA REDWOOD COAST-HUMBOLDT COUNTY (ACV)

RNP APCH - GPS.		MISSED APPROACH: Climb to 3200 direct HIPGI and on track 295° to CULDU and hold.
	For uncompensated Baro-VNAV systems, LNAV/VNAV NA below -2°C or above 54°C. Circling NA northeast of Rwy 14-32.	

ASOS 118.525	SEATTLE CENTER 124.85 306.3	UNICOM 123.0 (CTAF) 0
------------------------	---------------------------------------	---------------------------------



VGSIs and RNAV glidepath not coincident (VGSIs Angle 3.00°/TCH 48)				
4 NM Holding Pattern	SEGVE	OGMOW		
3000	193°	013°	1900	tr 295°
GP 3.00° TCH 43	1900	*2.7 NM to RW01		
*LNAV only.				
6 NM 2.6 NM 2.7 NM				
CATEGORY	A	B	C	D
LPV DA	870-2½ 666 (700-2½)			
LNAV/ DA	838-2½ 634 (700-2½)			
LNAV MDA	1080-1 876 (900-1)	1080-1¼ 876 (900-1¼)	1080-2½	876 (900-2½)
CIRCLING	1080-1¼	858 (900-1¼)	1080-2½	1080-2¾ 858 (900-2¾)



SW-2, 10 JUL 2025 to 07 AUG 2025

SW-2, 10 JUL 2025 to 07 AUG 2025