
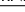
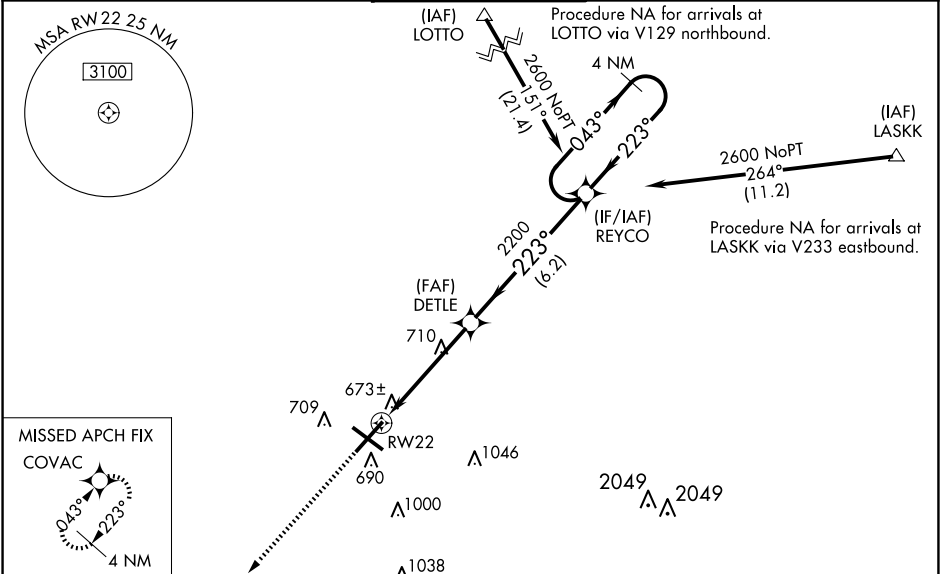


WAAS CH 81809 W22A	APP CRS 223°	Rwy Idg TDZE 598 Apt Elev 598	8001
--	------------------------	---	-------------

RNAV (GPS) RWY 22
ABRAHAM LINCOLN CAPITAL (SPI)

RNP APCH - GPS.				<div>MALSR</div> <div></div>	MISSED APPROACH: Climb to 2700 direct COVAC and hold.
<div></div> <div>ASR</div>	For uncompensated Baro-VNAV systems, LNAV/VNAV NA below -16°C or above 54°C. When local altimeter not received, use Lincoln altimeter setting: increase LPV DA to 942 feet and all visibilities ½ SM, LNAV/VNAV DA to 1108 feet and all visibilities ½ SM; increase all MDAs 60 feet and visibility LNAV and Circling Cat C/D ¼ SM. Baro-VNAV and VDP NA when using Lincoln altimeter setting. For inop ALS, increase LPV all Cats visibility to ¾ SM. For inop ALS when using Lincoln altimeter setting, increase LPV all Cats visibility to 1 SM, increase LNAV/VNAV all Cats visibility to 1 ½ SM.				
ATIS	SAINT LOUIS APP CON ★	SPRINGFIELD TOWER ★	GND CON	CLNC DEL	UNICOM
127.65 270.1	126.15 323.0	121.3 (CTAF) 0 257.8	121.9 348.6	121.7	122.95



ELEV 598	D	TDZE 598
<p>REIL Rwy 13 HIRL Rwy 4-22 and 13-31 </p>		
<p>2700 COVAC </p>		
<p>REYCO 4 NM Holding Pattern</p>		
<p>DETLE 1 NM to RW22</p>		
<p>GP 3.00° TCH 54</p>		
<p>1 NM 3.8 NM 6.2 NM</p>		
CATEGORY	A	B C D
LPV DA	884-½	286 (300-½)
LNAV/VNAV DA	1050-¾	452 (500-¾)
LNAV MDA	980-½ 382 (400-½)	980-⅝ 382 (400-⅝)
C CIRCLING	1040-1¼ 442 (500-1¼)	1100-1¼ 502 (600-1¼) 1360-2¼ 762 (800-2¼) 1380-2½ 782 (800-2½)

EC-3, 10 JUL 2025 to 07 AUG 2025

EC-3, 10 JUL 2025 to 07 AUG 2025