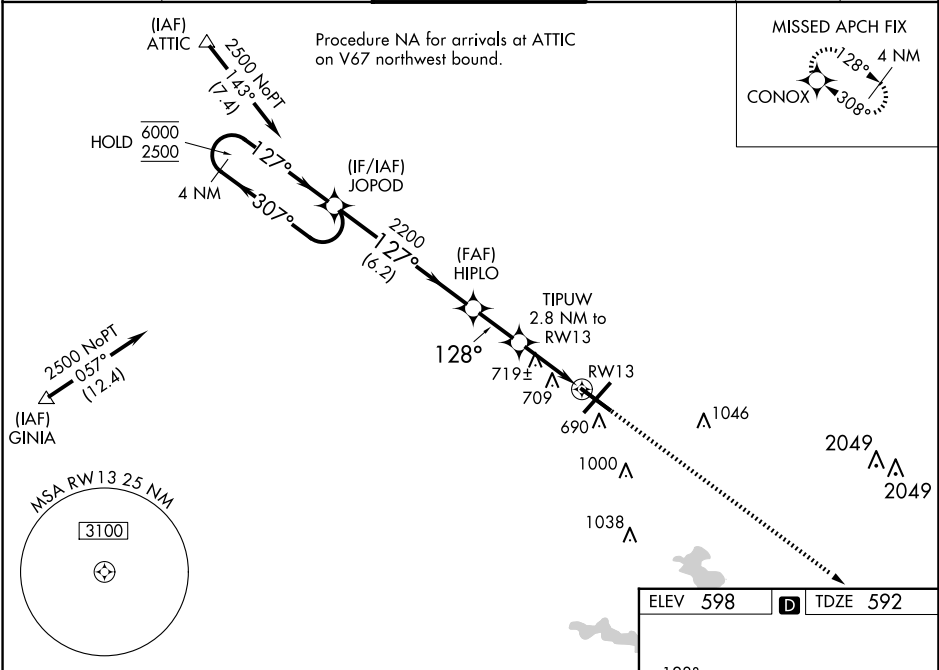


WAAS CH <b>99616</b> <b>W13A</b>	APP CRS <b>128°</b>	Rwy Idg TDZE Apt Elev	<b>7217</b> <b>592</b> <b>598</b>
--	------------------------	-----------------------------	---

RNAV (GPS) RWY 13  
ABRAHAM LINCOLN CAPITAL (SPI)

RNP APCH - GPS.	Baro-VNAV and VDP NA when using Lincoln altimeter setting. For uncompensated Baro-VNAV systems, LNAV/VNAV NA below -16°C or above 54°C. When local altimeter setting not received, use Lincoln altimeter setting: increase LPV DA to 932 feet and all visibilities 1/8 SM; increase LNAV/VNAV DA to 1068 feet and all visibilities 1/4 SM; increase all MDAs 60 feet and LNAV visibility Cat C/D 1/4 SM, and Circling visibility Cat C/D 1/4 SM. Rwy 13 helicopter visibility reduction below 3/4 SM NA.	MISSED APPROACH: Climb to 3100 direct CONOX and hold.
-----------------	--	--

ATIS <b>127.65 270.1</b>	SAINT LOUIS APP CON * <b>126.15 323.0</b>	SPRINGFIELD TOWER * <b>121.3 (CTAF) 257.8</b>	GND CON <b>121.9 348.6</b>	CLNC DEL <b>121.7</b>	UNICOM <b>122.95</b>
-----------------------------	--	--	-------------------------------	--------------------------	-------------------------



4 NM Holding Pattern		JOPOD		3100		CONOX	
6000 2500		307° 127°		127°		128°	
GP 3.00° TCH 50		2200		2200		1520	
		6.2 NM		2 NM		1.7 NM	
CATEGORY		A		B		C	
LPV DA		875-7/8		283 (300-7/8)			
LNAV/VNAV DA		1011-1 1/8		419 (500-1 1/8)			
LNAV MDA		980-1 388 (400-1)		980-1 1/8 388 (400-1 1/8)			
CIRCLING		1040-1 442 (500-1)		1100-1 502 (600-1)		1360-2 1/4 762 (800-2 1/4)	
						1380-2 1/2 782 (800-2 1/2)	

