

LOC I-CJF	APP CRS	Rwy Idg	7000
110.15	308°	TDZE	590
		Apt Elev	598

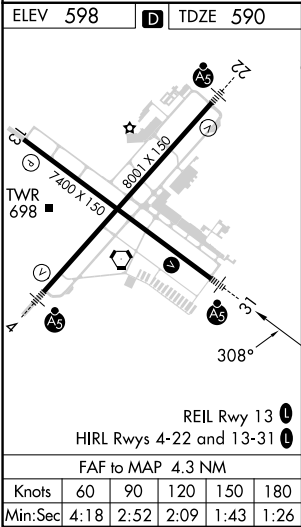
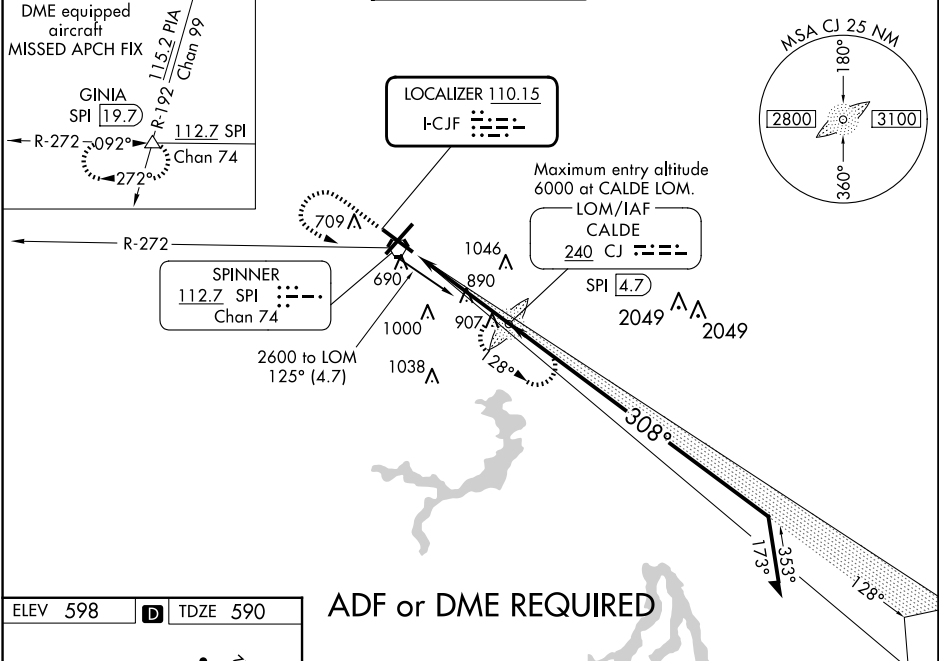
ILS or LOC RWY 31
ABRAHAM LINCOLN CAPITAL (SPI)




ADF or DME required. When local altimeter setting not received, use Logan County altimeter setting: increase DA to 848 feet and all MDA 60 feet, increase Circling Cat C/D/E visibility ¼ SM. For inop MALSR, increase S-ILS-31 Cat E visibility to ¾ and S-LOC-31 Cat E visibility to 2¼. Autopilot coupled approach NA below 850.

MALSR

MISSED APPROACH: Climb to 1700 then climbing left turn to 3100 direct CALDE LOM and hold. (DME equipped aircraft climb to 1700, then climbing left turn to 3200 via SPI R-272 to GINIA INT/SPI 19.7 DME and hold.)

ATIS	SAINT LOUIS APP CON ★	SPRINGFIELD TOWER ★	GND CON	CLNC DEL	UNICOM
127.65 270.1	126.15 323.0	121.3 (CTAF) 257.8	121.9 348.6	121.7	122.95



1700	3100	CJ				
						
			CJ LOM SPI 4.7	Remain within 15 NM		
			6000	128°		
			2014	2600		
			308°			
			2100			
			GS 3.00° TCH 55			
			4.3 NM			
CATEGORY	A	B	C	D	E	
S-ILS 31	790-½ 200 (200-½)					
S-LOC 31	1200-½ 610 (700-½)	1200-1¼ 610 (700-1¼)	1200-1½ 610 (700-1½)	1200-1¾ 610 (700-1¾)	1200-2 610 (700-2)	
CIRCLING	1200-1 602 (700-1)	1360-2¼ 762 (800-2¼)	1380-2½ 782 (800-2½)	1380-2¾ 782 (800-2¾)	1380-3 782 (800-3)	

EC-3, 10 JUL 2025 to 07 AUG 2025

EC-3, 10 JUL 2025 to 07 AUG 2025