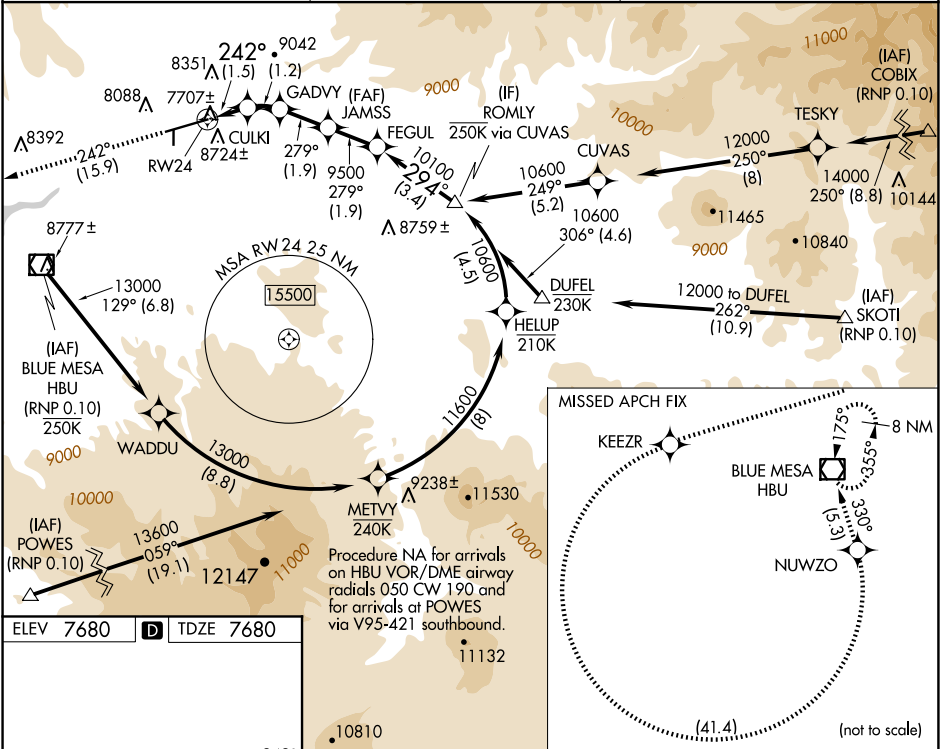


APP CRS	Rwy Ldg	9400
242°	TDZE	7680
	Apt Elev	7680

RNAV (RNP) RWY 24
GUNNISON-CRESTED BUTTE RGNL (GUC)

RNP AR APCH - GPS, RF, min RNP 0.10. Authorization required.	MISSED APPROACH: Climb to 14000 on track 242° to KEEZR, and left turn to NUWZO, and on track 330° to HBU VOR/DME and hold. Missed approach requires minimum climb of 425 feet per NM to 9000.
--	--

AWOS-3PT 135.075	DENVER CENTER 124.5 350.25	UNICOM 122.7 (CTAF) 0
---------------------	-------------------------------	--------------------------



ELEV 7680	TDZE 7680	VGSI and RNAV glidepath not coincident (VGSI Angle 3.60/TCH 71).			
RW24		CULKI	GADVY	JAMSS	FEGUL
8320		8776	9500	10100	10600
1.5 NM		1.2 NM	1.9 NM	1.9 NM	3.4 NM
CATEGORY	A	B	C	D	
RNP 0.10 DA	8029-1 349 (400-1)				NA
AUTHORIZATION REQUIRED					

SW-1, 10 JUL 2025 to 07 AUG 2025

SW-1, 10 JUL 2025 to 07 AUG 2025