

LOC/DME I-GUC 110.5 Chan 42	APP CRS 062°	Rwy Ldg TDZE Apt Elev	9400 7667 7680
---	------------------------	-----------------------------	---

ILS or LOC RWY 6
GUNNISON-CRESTED BUTTE RGNL (GUC)

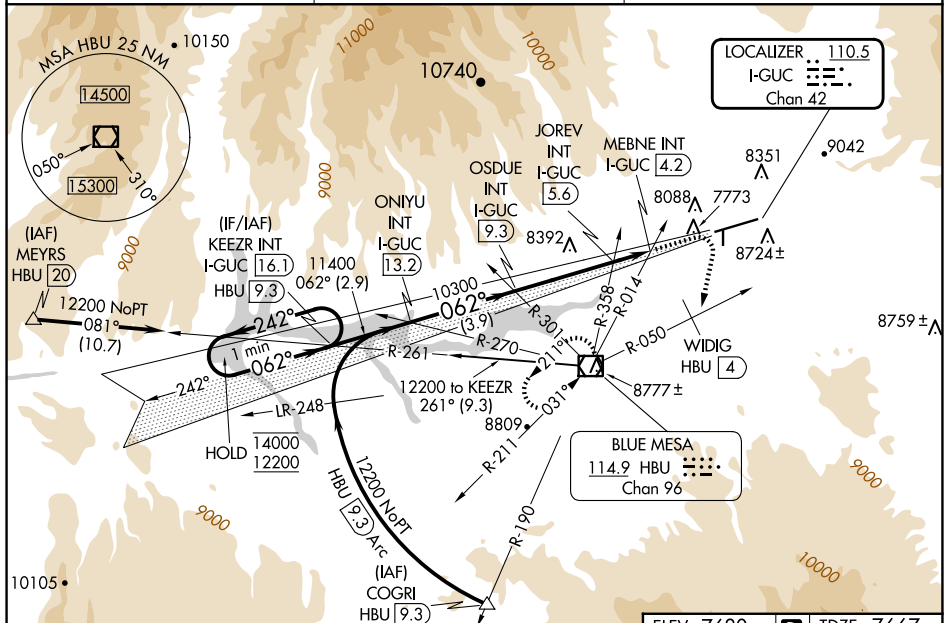
DME required.

MALSF

MISSED APPROACH: Climb to 10000 then climbing right turn to 12000 on heading 180° and HBU VOR/DME R-050 to WIDIG/HBU 4 DME continue on HBU VOR/DME R-050 to HBU VOR/DME and hold.

T Rwy 6 helicopter visibility reduction below $\frac{3}{4}$ SM NA.
A Inop table does not apply. Procedure NA when airport
 closed except by prior arrangement.
❄ -25°C Circling NA to Rwy 17 and 35.

AWOS-3PT
135.075

DENVER CENTER
124.5 350.25UNICOM
122.7 (CTAF) 

KEEZR INT I-GUC [16.1]		10000 ↑		12000 hdg 180°		HBU R-050		WIDIG HBU [4]		HBU R-050		HBU []	
One Minute Holding Pattern		ONIYU INT I-GUC [13.2]		OSDUE INT I-GUC [9.3]		JOREV INT I-GUC [5.6]		MEBNE INT I-GUC [4.2]					
14000 ← 242° 12200 062° →		062° 11400		10300		10300		9020					
GS 3.20° TCH 49		2.9 NM		3.9 NM		3.7 NM		1.4 NM		2.4 NM			
CATEGORY		A		B		C		D					
S-ILS 6		8698-3		1031 (1100-3)						NA			
S-LOC 6		9020-3		1353 (1400-3)									
CIRCLING		9260-3		1580 (1600-3)		9540-3 1860 (1900-3)		10040-3 2360 (2400-3)					
JOREV FIX MINIMUMS													
S-LOC 6		8640-3		973 (1000-3)									
CIRCLING		9260-3		1580 (1600-3)		9540-3 1860 (1900-3)		10040-3 2360 (2400-3)					

ELEV 7680
D
TDZE 7667

062°

2981 X 1500

35

0.5% UP

0.3% UP

9400 X 150

2A

HIRL Rwy 6-24

REIL Rwy 24

FAF to MAP 5.1 NM					
Knots	60	90	120	150	180
Min:Sec	5:06	3:24	2:33	2:02	1:42