

WAAS CH <b>48813</b> <b>W05A</b>	APP CRS <b>054°</b>	Rwy Idg <b>10000</b> TDZE <b>384</b> Apt Elev <b>435</b>
--	------------------------	--

RNAV (GPS) Y RWY 5L


RALEIGH-DURHAM INTL (RDU)

RNP APCH-GPS.

⚠

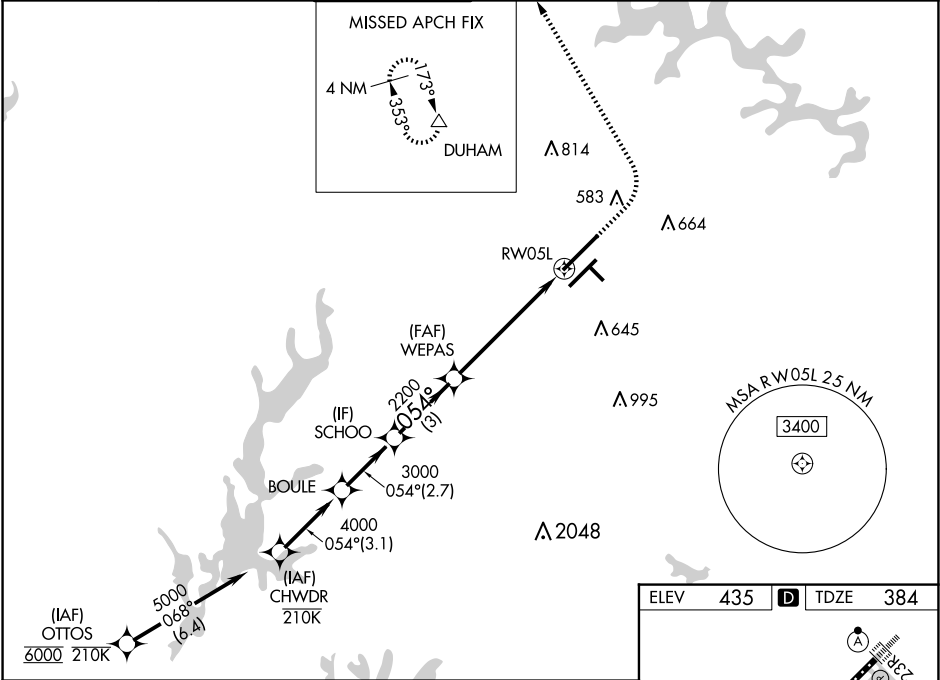
Simultaneous approach authorized. LNAV procedure NA during simultaneous operations. For uncompensated Baro-VNAV systems, LNAV/VNAV NA below -12°C or above 54°C. For inop ALS, increase LNAV/VNAV all Cats visibility to RVR 5500. Use of FD or AP required during simultaneous operations.

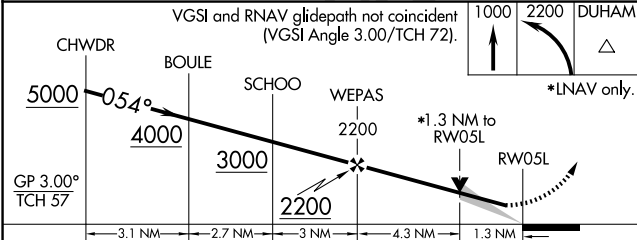
MALSR



MISSED APPROACH: Climb to 1000 then climbing left turn to 2200 direct DUHAM and hold.

D-ATIS <b>123.8</b>	RALEIGH APP CON <b>127.675 307.9</b>	RALEIGH TOWER <b>127.45 257.8</b>	GND CON <b>121.9 348.6</b>	CLNC DEL <b>120.1</b>	CPDLC
------------------------	---	--------------------------------------	-------------------------------	--------------------------	-------



VGSI and RNAV glidepath not coincident (VGSI Angle 3.00/TCH 72).				
				
GP 3.00° TCH 57				
CHVDR BOULE SCHOO WEPAS RW05L				
5000 4000 3000 2200 1000				
3.1 NM 2.7 NM 3 NM 4.3 NM 1.3 NM				
CATEGORY	A	B	C	D
LPV DA	598/18		214 (200-½)	
LNAV/VNAV DA	748/35		364 (400-¾)	
LNAV MDA	840/24	456 (500-½)	840/45	456 (500-¾)
CIRCLING	960-1	525 (600-1)	1020-1½ 585 (600-½)	1180-2½ 745 (800-2½)

