

WAAS  
CH **65713**  
**W23B**

APP CRS  
**234°**

Rwy Idg  
TDZE **435**  
Apt Elev **435**

**RNAV (GPS) Y RWY 23L**

RALEIGH-DURHAM INTL (RDU)

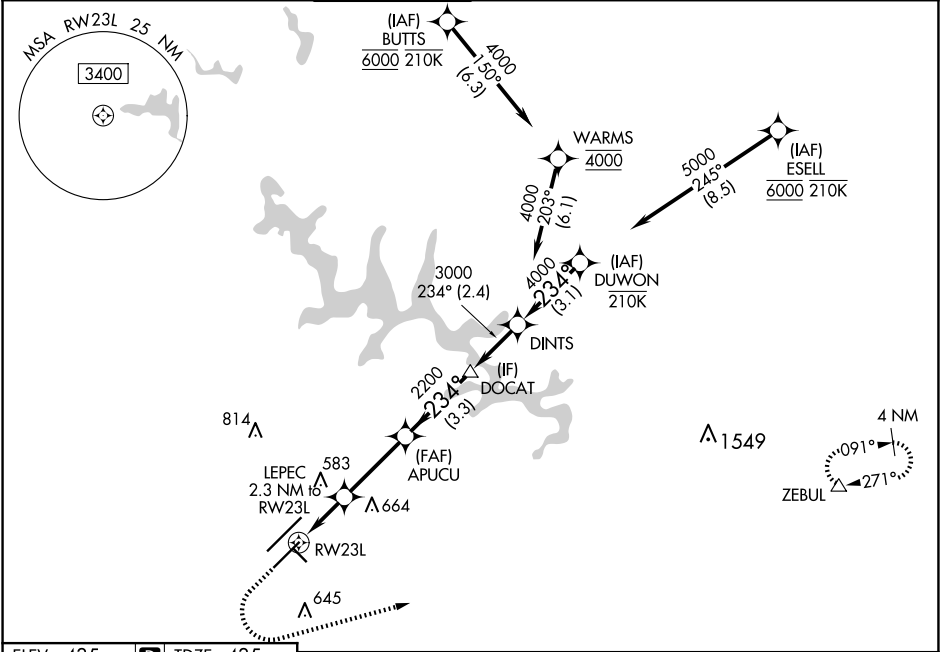
RNP APCH-GPS.

Simultaneous approach authorized. LNAV procedure NA during simultaneous operations.  
For uncompensated Baro-VNAV systems, LNAV/VNAV NA below -1.2°C or above 54°C.  
Use of FD or AP required during simultaneous operations. For inop ALS, increase LNAV Cat C/D visibility to 1 3⁄8 SM.

MALSR

MISSED APPROACH:  
Climb to 1100 then climbing left turn to 2600 direct ZEBUL and hold.

D-ATIS <b>123.8</b>	RALEIGH APP CON <b>127.675 307.9</b>	RALEIGH TOWER <b>127.45 257.8</b>	GND CON <b>121.9 348.6</b>	CINC DEL <b>120.1</b>	CPDLC
------------------------	---	--------------------------------------	-------------------------------	--------------------------	-------



ELEV 435 TDZE 435

REIL Rwy 32  
MIRL Rwy 14-32  
HIRL Rwy 5R-23L and 5L-23R  
TDZ/CL Rwy 5L, 23R, and 23L

	1100	2600	ZEBUL	
	* LNAV only.			
	LEPEC 2.3 NM to RWY23L	APUCU	DOCAT	DINTS
	*1.4 NM to RWY23L	2200	3000	5000
	1200*	2200		GP 3.00° TCH 56
	1.4 NM	0.9 NM	3.1 NM	3.3 NM
			2.4 NM	3.1 NM
CATEGORY	A	B	C	D
LPV DA	635/18 200 (200-½)			
LNAV/VNAV DA	820/35 385 (400-½%)			
LNAV MDA	920/24	485 (500-½)	920/50	485 (500-1)
CIRCLING	960-1	525 (600-1)	1020-1½ 585 (600-1½)	1180-2½ 745 (800-2½)