

APP CRS

234°

Rwy Idg

10000

TDZE

409

Apt Elev

435

RNAV (RNP) Z RWY 23R

RALEIGH-DURHAM INTL (RDU)

RNP AR APCH-GPS.

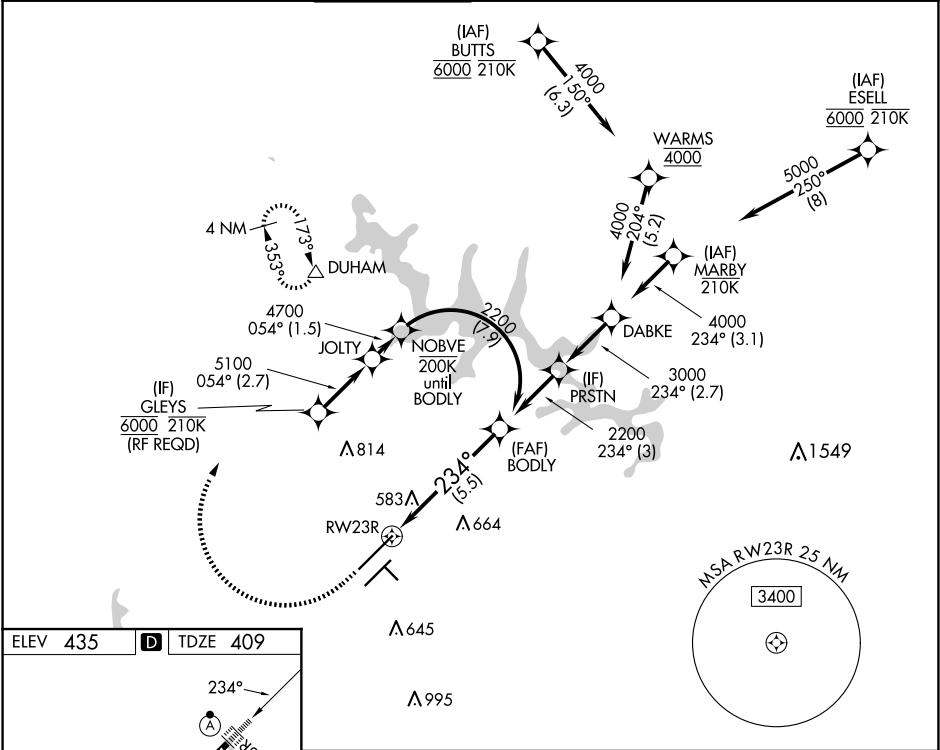
For uncompensated Baro-VNAV systems, procedure NA below -12°C or above 54°C.
For inop ALS, increase RNP 0.15 all Cats visibility to RVR 5500, increase RNP 0.30 all Cats visibility to 1% SM. Simultaneous approach authorized except for arrivals at GLEYS.

ALSF-2

MISSED APPROACH:

Climb to 1000 then climbing right turn to 2200 direct DUHAM and hold.

D-ATIS 123.8	RALEIGH APP CON 127.675 307.9	RALEIGH TOWER 127.45 257.8	GND CON 121.9 348.6	CLNC DEL 120.1	CPDLC
-----------------	----------------------------------	-------------------------------	------------------------	-------------------	-------



ELEV 435

D

TDZE 409

234°

23R

1000 X 150

TWR 659

5570 X 100

7500 X 150

REIL Rwy 32

MIRL Rwy 14-32

HIRL Rwys 5R-23L and 5L-23R

TDZ/CL Rwys 5L, 23L, and 23R

1000

2200

DUHAM

VGSI and RNAV glidepath not coincident (VGSI Angle 3.00/TCH 69).

See planview for multiple IF locations.

BODLY

2200

2200

GP 3.00°

TCH 55

CATEGORY	A	B	C	D
RNP 0.15 DA		760/30	351 (400-5%)	
RNP 0.30 DA		910/55	501 (500-1)	

AUTHORIZATION REQUIRED