

APP CRS
234°

Rwy Idg
TDZE
Apt Elev
7500
435
435

RNAV (RNP) Z RWY 23L

RALEIGH-DURHAM INTL (RDU)

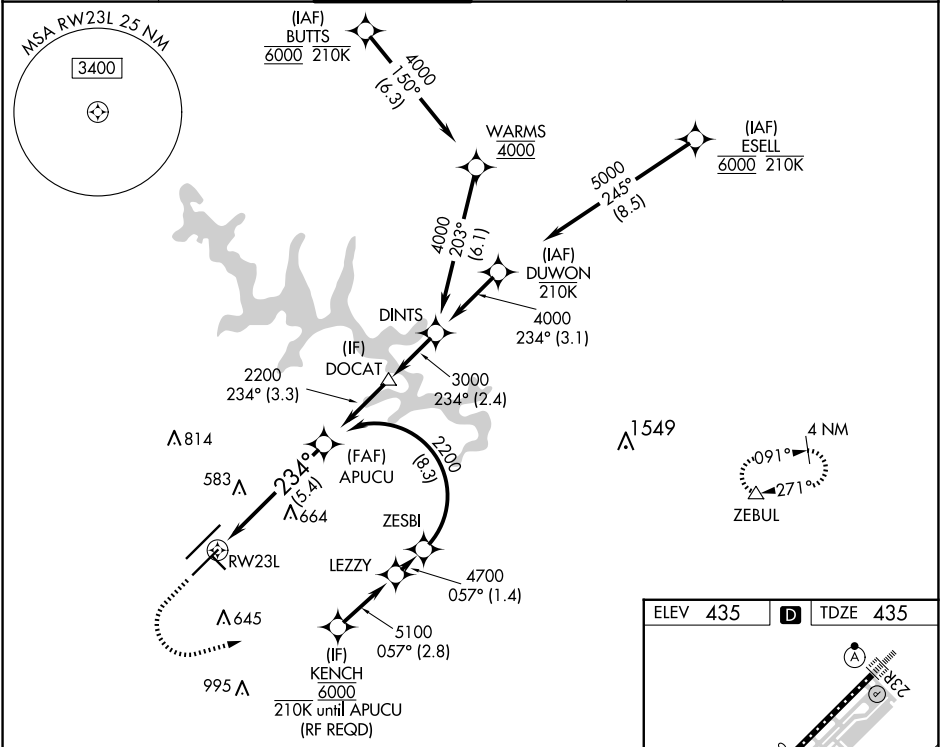
RNP AR APCH-GPS.

For uncompensated Baro-VNAV systems, procedure NA below -12°C or above 54°C. Simultaneous approach authorized, except for arrivals at KENCH. For inop ALS, increase RNP 0.10 all Cats visibility to RVR 5500.

MALSR

MISSED APPROACH: Climb to 1100 then climbing left turn to 2600 direct ZEBUL and hold.

D-ATIS 123.8	RALEIGH APP CON 127.675 307.9	RALEIGH TOWER 127.45 257.8	GND CON 121.9 348.6	CLNC DEL 120.1	CPDLC
------------------------	---	--------------------------------------	-------------------------------	--------------------------	-------



1100

2600

ZEBUL

See planview for multiple IF locations.

RW23L

APUCU 2200

GP 3.00°

TCH 56

5.4 NM

CATEGORY	A	B	C	D
RNP 0.10 DA	776/30 341 (400-%)			
RNP 0.30 DA	826/35 391 (400-%)			

AUTHORIZATION REQUIRED

ELEV 435

TDZE 435

10000 X 150

7500 X 150

3570 X 100

TWR 659

REIL Rwy 32

MIRL Rwy 14-32

HIRL Rwy 5R-23L and 5L-23R

TDZ/CL Rwy 5L, 23L, and 23R