

D-ATIS
123.8
CLINC DEL
120.1
CPDLC
RALEIGH DEP CON
125.3 353.675 (055°-229°)
132.35 256.9 (230°-054°)

TOP ALTITUDE:
AS ASSIGNED BY ATC

NOTE: RADAR required.
NOTE: Propeller aircraft only.

SOUTH BOSTON
110.4 SBV
Chan 41

FLAT ROCK
113.3 FAK
Chan 80

NORTH DEPARTURE
132.35 256.9

GREENSBORO
116.2 GSO
Chan 109

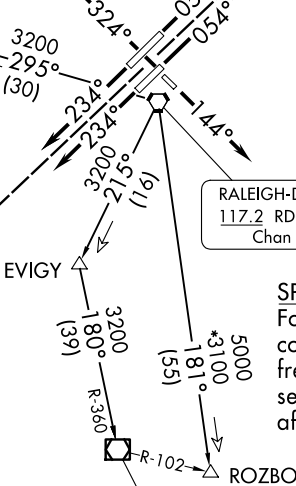
TAR RIVER
117.8 TYI
Chan 125

SOUTH DEPARTURE
125.3 353.675

LIBERTY
113.0 LIB
Chan 77

RALEIGH-DURHAM
117.2 RDU
Chan 119

SANDHILLS
111.8 SDZ
Chan 55



SPECIAL INSTRUCTIONS:
For appropriate departure
control frequency use
frequency depicted within
sector for route of flight
after RDU VORTAC.

TAKEOFF MINIMUMS

Rwys 5L/R: Standard.
Rwy 23L: Standard with a minimum climb of 250' per NM to 2300.
Rwy 23R: Standard with a minimum climb of 240' per NM to 2100.
Rwy 14: Standard with a minimum climb of 310' per NM to 1100.
Rwy 32: 300-1.

(CONTINUED ON FOLLOWING PAGE)

NOTE: Chart not to scale.