

LOC/DME I-RDU 109.5 Chan 32	APP CRS 054°	Rwy Idg 7500 TDZE 420 Apt Elev 435	ILS or LOC RWY 5R RALEIGH-DURHAM INTL (RDU)
--	------------------------	---	--

RNAV 1-DME/DME/IRU or GPS or RADAR required for procedure entry. DME or RADAR required for LOC only.

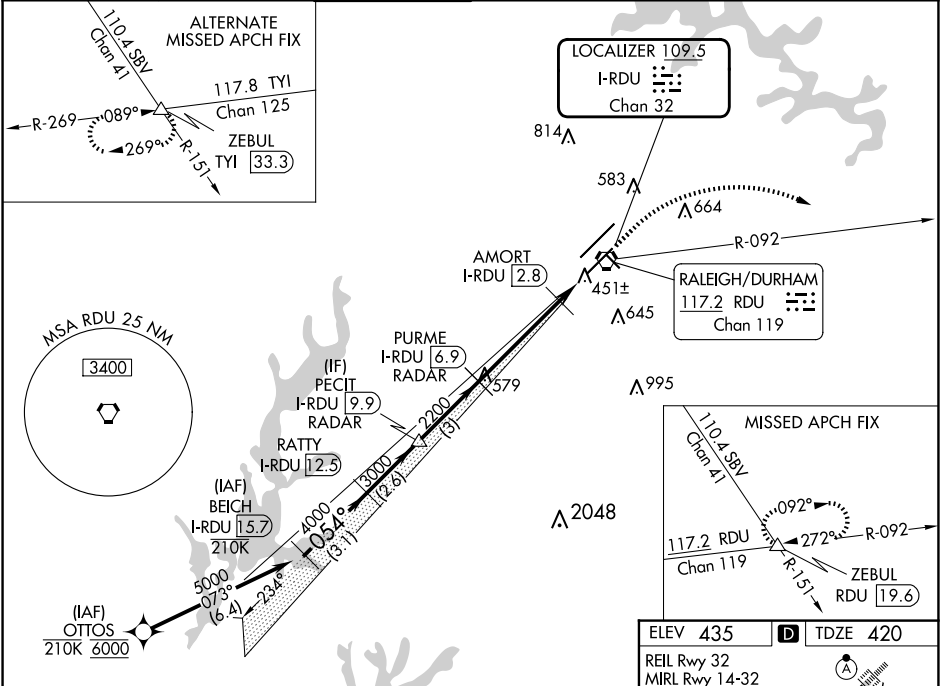
Simultaneous approach authorized.

RVR 1800 authorized with use of FD or AP or HUD to DA.

MALSR

MISSED APPROACH: Climb to 1000 then climbing right turn to 2600 on heading 130° and on RDU VORTAC R-092 to ZEBUL INT/ RDU 19.6 DME and hold.

D-ATIS 123.8	RALEIGH APP CON 127.675 307.9	RALEIGH TOWER 127.45 257.8	GND CON 121.9 348.6	CLNC DEL 120.1	CPDLC
------------------------	---	--------------------------------------	-------------------------------	--------------------------	-------



VGSI and ILS glidepath not coincident (VGSI Angle 3.00/TCH 62).

BEICH I-RDU 15.7

RATTY I-RDU 12.5

PECIT I-RDU 9.9

PURME I-RDU 6.9

AMORT I-RDU 2.8

I-RDU 1.4

5000 054° 4000 3000 2200 2200 900 *LOC only.

GS 3.00° TCH 56

3.1 NM 2.6 NM 3 NM 4.1 NM 1.4 NM

1000 2600 RDU R-092 ZEBUL

Use I-RDU DME when on the localizer course.

ELEV 435 D TDZE 420

REIL Rwy 32

MIRL Rwy 14-32

HIRL Rwy 5R-23L and 5L-23R

TDZ/CL Rwy 23R, 23L and 5L

TWR 659

23R 23L

1000 X 150

7500 X 150

3570 X 100

054°

CATEGORY	A	B	C	D
S-ILS 5R #	620/24 200 (200-½)			
S-LOC 5R	760/24 340 (400-½)		760/26 340 (400-½)	
CIRCLING	960-1 525 (600-1)		1020-1½ 585 (600-1½) 1180-2½ 745 (800-2½)	