

LOC/DME I-GKK
109.1
Chan 28

APP CRS
054°

Rwy Idg
TDZE
Apt Elev
10000
384
435

ILS or LOC RWY 5L
RALEIGH-DURHAM INTL (RDU)

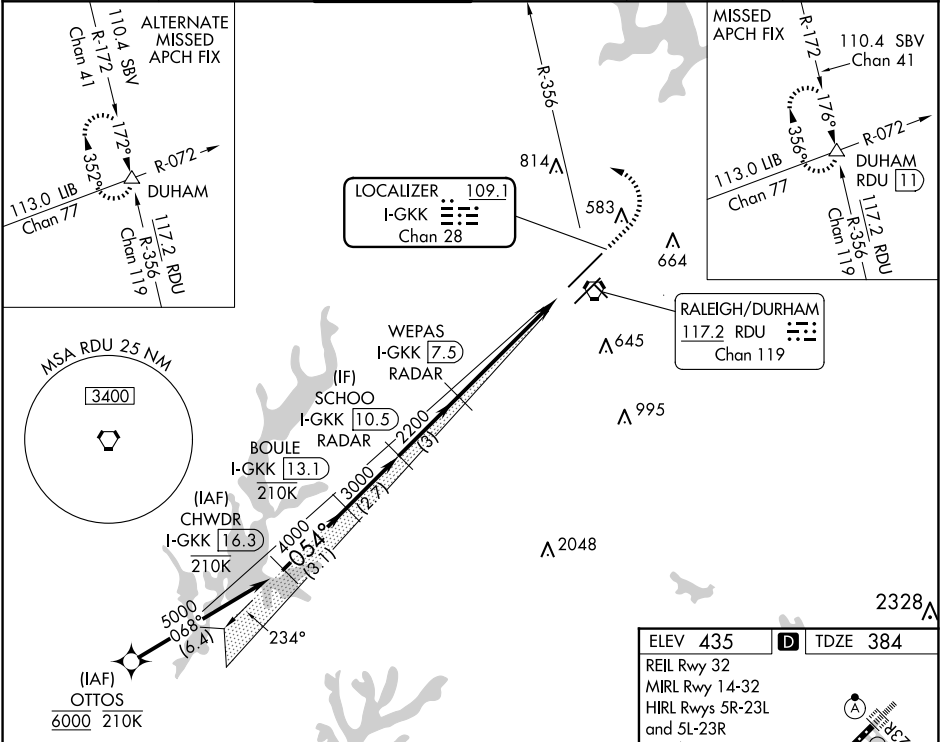
RNAV 1-DME/DME/IRU or GPS or RADAR required for procedure entry. DME or RADAR required for LOC only.

Simultaneous approach authorized.

MALSR

MISSED APPROACH: Climb to 1000 then climbing left turn to 2200 on heading 310° and RDU VORTAC R-356 to DUHAM INT/RDU 11 DME and hold.

D-ATIS 123.8	RALEIGH APP CON 127.675 307.9	RALEIGH TOWER 127.45 257.8	GND CON 121.9 348.6	CLNC DEL 120.1	CPDLC
------------------------	-----------------------------------------	--------------------------------------	-------------------------------	--------------------------	-------



CHWDR I-GKK 16.3	BOULE I-GKK 13.1	SCHOO I-GKK 10.5	WEPAS I-GKK 7.5	1000	2200	RDU R-356	DUHAM △	TDZ/CL Rwys 23R, 23L and 5L
5000-054°	4000	3000	2200	↑	hdg 310°			
GS 3.00° TCH 57				*I-GKK 3.1	I-GKK 1.9	*LOC only.		
VGSi and ILS glidepath not coincident (VGSi Angle 3.00/TCH 72).								
-3.1 NM -2.7 NM -3 NM -4.3 NM -1.3 NM								
CATEGORY	A		B	C		D		
S-ILS 5L	598/18 214 (200-½)							
S-LOC 5L	840/24 456 (500-½)			840/45 456 (500-¾)				
CIRCLING	960-1 525 (600-1)			1020-1½ 585 (600-1½)		1180-2½ 745 (800-2½)		
FAF to MAP 5.6 NM								
Knots	60	90	120	150	180			
Min:Sec	5:36	3:44	2:48	2:14	1:52			