

LOC/DME I-LEI 108.5 Chan 22	APP CRS 234°	Rwy Idg 7500 TDZE 435 Apt Elev 435
-------------------------------------------------	------------------------	---------------------------------------------------------------

ILS or LOC RWY 23L

RALEIGH-DURHAM INTL (RDU)

RNAV 1-DME/DME/IRU or GPS or RADAR required for procedure entry.
DME required for LOC only.

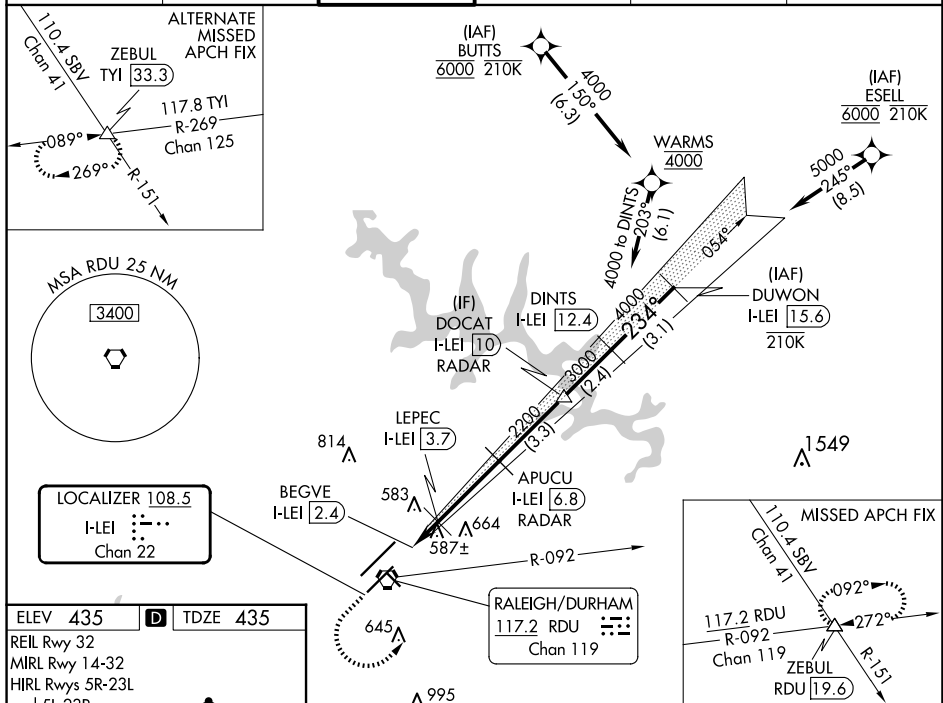
T Simultaneous approach authorized. For inop ALS, increase S-ILS 23L all
A Cats visibility to RVR 5500. Localizer unusable for coupled approaches
below 1100 or within 2 NM of threshold.

MALSR



MISSED APPROACH: Climb to 1100 then climbing left turn to 2600 on heading 050° and RDU VORTAC R-092 to ZEBUL INT and hold.

D-ATIS 123.8	RALEIGH APP CON 127.675 307.9	RALEIGH TOWER 127.45 257.8	GND CON 121.9 348.6	CLNC DEL 120.1	CPDLC
-----------------	----------------------------------	-------------------------------	------------------------	-------------------	-------



1100 ↑	2600 hdg 050°	RDU R-092	ZEBUL △	Localizer unusable from 1 NM from threshold.		DOCAT I-LEI 10	DINTS I-LEI 12.4	DUWON I-LEI 15.6
* LOC only.								
CATEGORY	A		B		C		D	
S-ILS 23L	806/35		371 (400- $\frac{5}{8}$)					
S-LOC 23L	840/40		405 (500- $\frac{3}{4}$)					
C CIRCLING	960-1 $\frac{1}{4}$		525 (600-1 $\frac{1}{4}$)		1020-1 $\frac{1}{2}$ 585 (600-1 $\frac{1}{2}$)		1180-2 $\frac{1}{2}$ 745 (800-2 $\frac{1}{2}$)	