

WAAS CH 97600 W08A	APP CRS 084°	Rwy Idg 6511 TDZE 1440 Apt Elev 1442
--	------------------------	---

RNAV (GPS) Y RWY 8

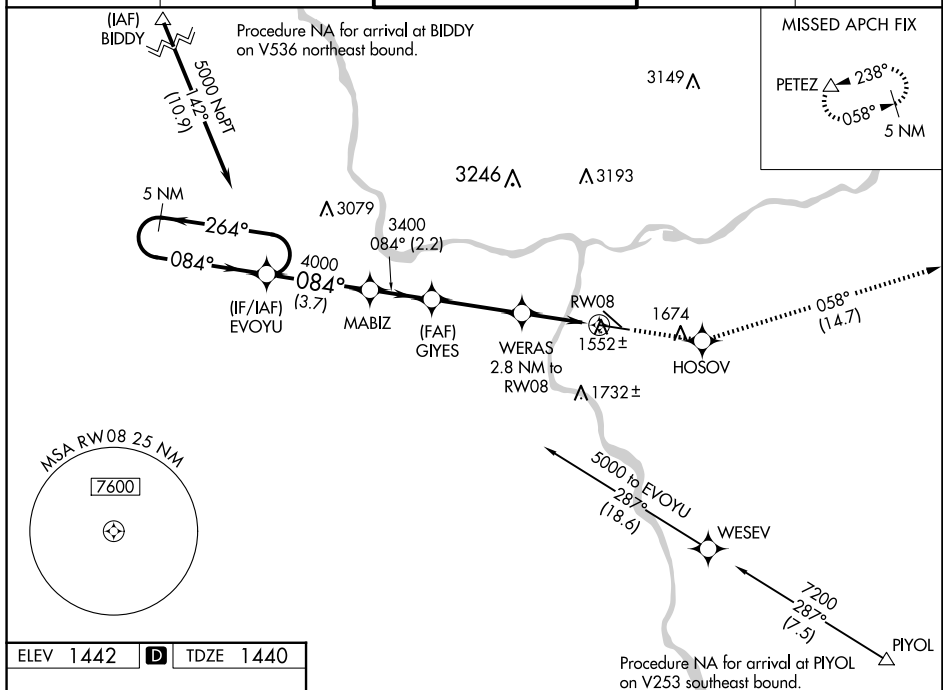
LEWISTON/NEZ PERCE COUNTY (LWS)



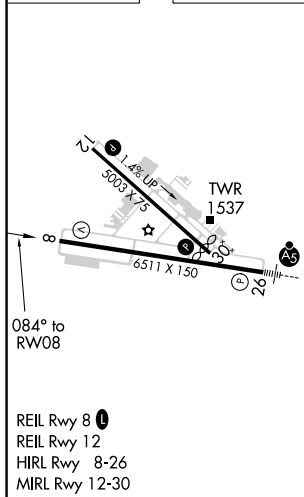
For uncompensated Baro-VNAV systems, LNAV/VNAV NA below -14°C (7°F) or above 34°C (93°F). DME/DME RNP-0.3 NA.

MISSED APPROACH: Climb to 5700 direct HOSOV and on track 058° to PETEZ and hold, continue climb-in-hold to 5700.

ASOS 135.575	SEATTLE CENTER 123.95 290.55	LEWISTON TOWER ★ 119.4 (CTAF) 0 318.8	GND CON 121.9	UNICOM 122.95
-----------------	---------------------------------	--	------------------	------------------



ELEV 1442	D	TDZE 1440
-----------	----------	-----------



CATEGORY	A	B	C	D
LPV DA	1690- $\frac{3}{4}$ 250 (300- $\frac{3}{4}$)			
LNAV/VNAV DA	1736-1 296 (300-1)			
LNAV MDA	1820-1	380 (400-1)	1820-1 $\frac{1}{8}$	380 (400-1 $\frac{1}{2}$)
CIRCLING	2000-1	558 (600-1)	2280-2 $\frac{1}{2}$ 838 (900-2 $\frac{1}{2}$)	2500-3 1058 (1100-3)