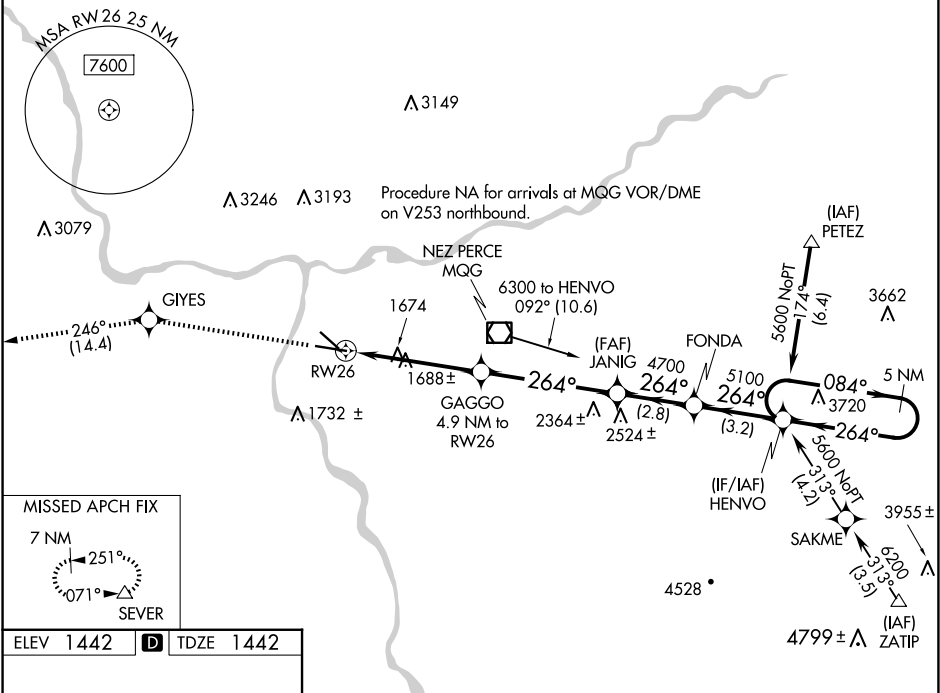


WAAS CH 78012 W26A	APP CRS 264°	Rwy Idg TDZE Apt Elev	6511 1442 1442
--	------------------------	-----------------------------	---

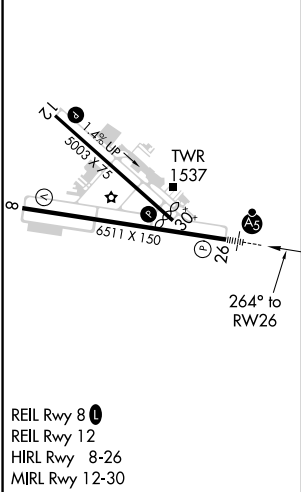
RNAV (GPS) Y RWY 26
LEWISTON/NEZ PERCE COUNTY (LWS)

<div><div></div><div></div></div> <div>For uncompensated Baro-VNAV systems, LNAV/VNAV NA below -17°C (2°F) or above 47°C (116°F). DME/DME RNP-0.3 NA.</div>	<div><div></div><div></div></div> <div>MALSR</div>	MISSED APPROACH: Climb to 7000 direct GIYES and on track 246° to SEVER and hold, continue climb-in-hold to 7000.
---	--	--

ASOS 135.575	SEATTLE CENTER 123.95 290.55	LEWISTON TOWER ★ 119.4 (CTAF) 0 318.8	GND CON 121.9	UNICOM 122.95
------------------------	--	---	-------------------------	-------------------------



ELEV 1442	D	TDZE 1442
------------------	----------	------------------



7000	GIYES	tr 246°	SEVER	VGSi and RNAV glidepath not coincident (VGSi Angle 3.00/TCH 51).	5 NM Holding Pattern
*LNAV only	GAGGO 4.9 NM to RW26	JANIG 4700	FONDA 5100	HENVO 5600	GP 3.00° TCH 51
	*1.4 NM to RW26				
	1.4	3.5 NM	4.9 NM	2.8 NM	3.2 NM
CATEGORY	A	B	C	D	
LPV DA	1642-1/2	200 (200-1/2)			
LNAV/VNAV DA	1962-1 1/4	520 (600-1 1/4)			
LNAV MDA	1940-1/2	498 (500-1/2)	1940-1	498 (500-1)	
CIRCLING	2000-1	558 (600-1)	2280-2 1/2	838 (900-2 1/2)	2500-3
					1058 (1100-3)