

WAAS  
CH **56500**  
**W12A**

APP CRS  
**117°**

Rwy Idg  
TDZE **1415**  
Apt Elev **1442**

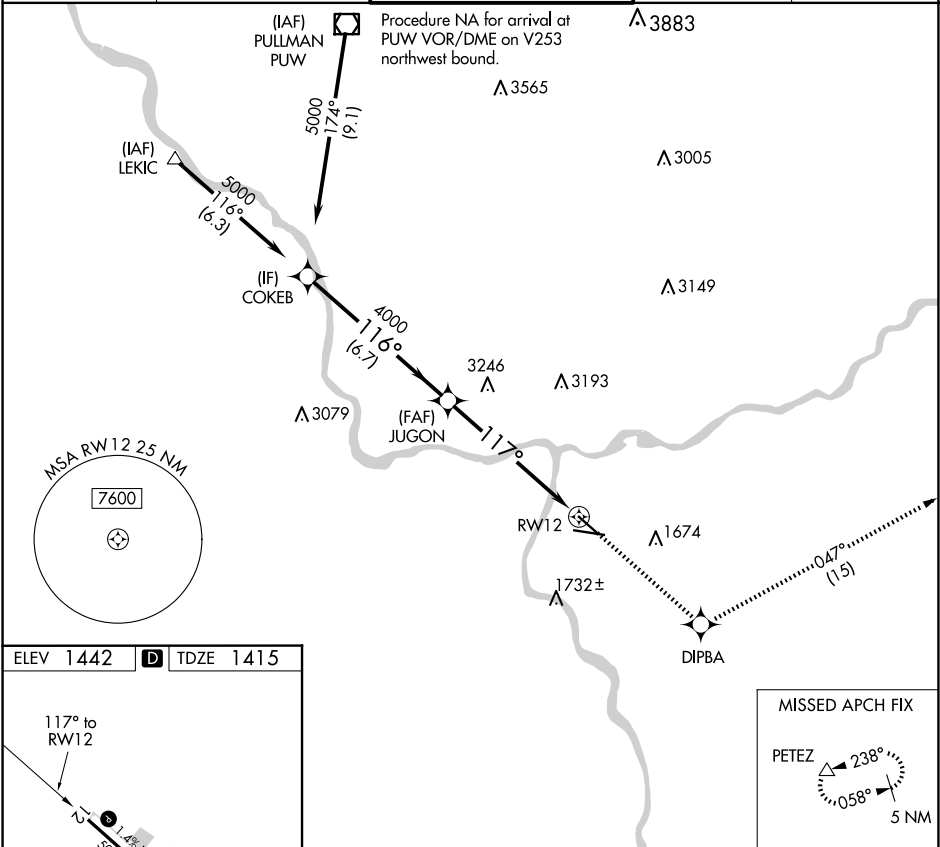
**RNAV (GPS) Y RWY 12**

LEWISTON/NEZ PERCE COUNTY (LWS)

When local alrimeter setting not received, procedure NA.  
DME/DME RNP-0.3 NA. Helicopter visibility reduction below ¾ SM NA.

MISSED APPROACH: Climb to 5700 direct DIPBA and on track 047° to PETEZ and hold, continue climb-in-hold to 5700.

ASOS <b>135.575</b>	SEATTLE CENTER <b>123.95 290.55</b>	LEWISTON TOWER ★ <b>119.4 (CTAF) 0 318.8</b>	GND CON <b>121.9</b>	UNICOM <b>122.95</b>
------------------------	--	---	-------------------------	-------------------------



ELEV **1442** TDZE **1415**

REIL Rwy 8  
REIL Rwy 12  
HIRL Rwy 8-26  
MIRL Rwy 12-30

VGSI and RNAV glidepath not coincident (VGSI Angle 3.00/TCH 40).

COKEB

JUGON

RWY 12

5000

4000

4000

GP 3.87°

TCH 55

6.7 NM

6.3 NM

CATEGORY	A	B	C	D
LPV	DA	1793-1 378 (400-1)	NA	

5700

DIPBA

tr 047°

PETEZ