

APP CRS  
084°

Rwy Idg  
TDZE  
Apt Elev

6511  
1440  
1442

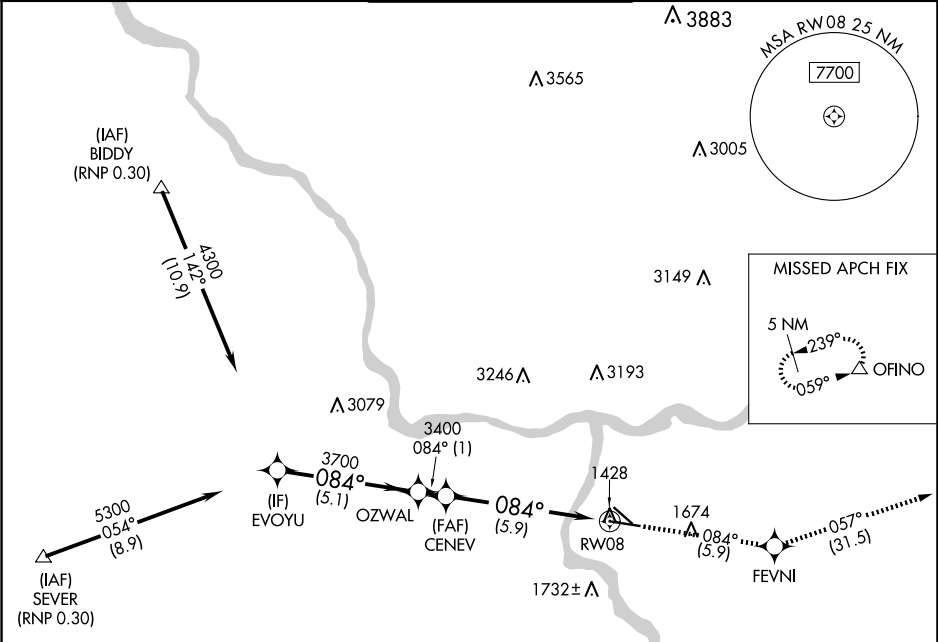
RNAV (RNP) Z RWY 8

LEWISTON/NEZ PERCE COUNTY (LWS)

GPS required. For uncompensated Baro-VNAV systems, procedure NA below -16°C (3°F) or above 46°C (115°F). When VGSI inop, procedure NA at night.

MISSED APPROACH: Climb to 6000 via track 084° to FEVNI and via track 057° to OFINO and hold.

ASOS 135.575	SEATTLE CENTER 123.95 290.55	LEWISTON TOWER ★ 119.4 (CTAF) 0 318.8	GND CON 121.9	UNICOM 122.95
-----------------	---------------------------------	--	------------------	------------------



ELEV 1442

TDZE 1440

VGSI and RNAV glidepath not coincident (VGSI Angle 3.00/TCH 45).

EVOYU

OZWAL

CENEV

RW08

4300

3700

3400

GP 3.00° TCH 55

5.1 NM

1 NM

5.9 NM

6000

FEVNI

OFINO

tr 084°

tr 057°

Procedure Turn NA

GP 3.00° TCH 55

3700

3400

RW08

CATEGORY

A

B

C

D

RNP 0.30 DA

1752-1 312 (400-1)

AUTHORIZATION REQUIRED

REIL Rwy 8

REIL Rwy 12

HIRL Rwy 8-26

MIRL Rwy 12-30

TWR 1537

5003 X 75

6511 X 150

084°