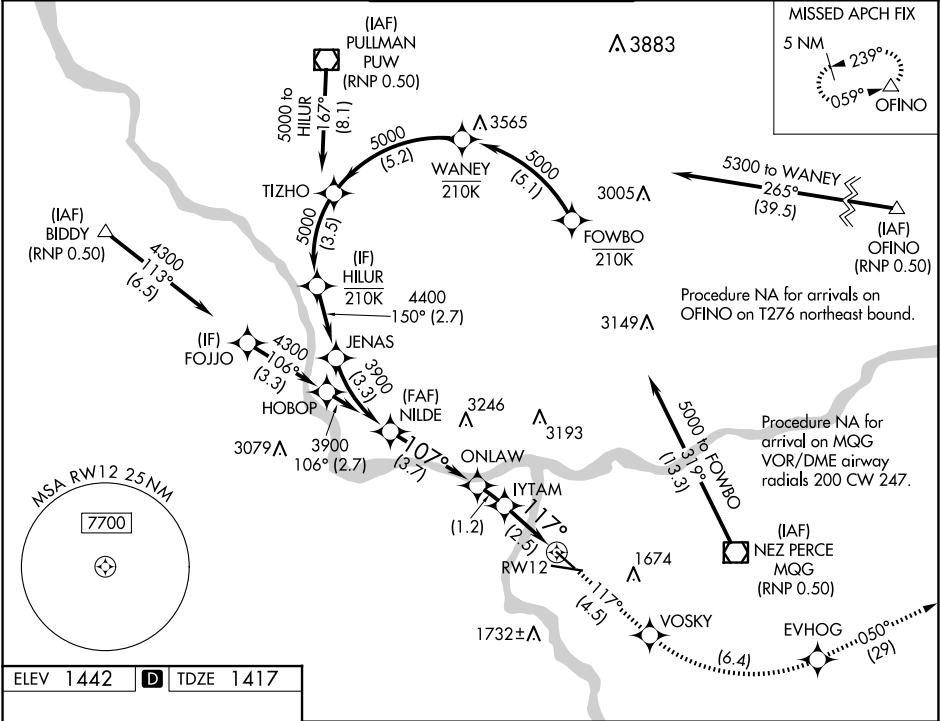


APP CRS	Rwy Idg	4750
117°	TDZE	1417
	Apt Elev	1442

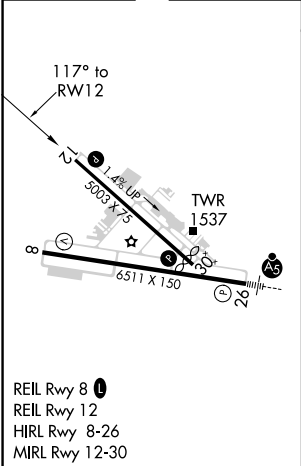
RNAV (RNP) Z RWY 12
LEWISTON/NEZ PERCE COUNTY (LWS)

RNP AR APCH-GPS. ▼ For uncompensated Baro-VNAV systems, procedure NA below -12°C or above 54°C.	MISSED APPROACH: Climb to 6000 on track 117° to VOSKY then left turn 6000 to EVHOG and on track 050° to OFINO and hold. *Missed approach requires minium climb of 260 feet per NM to 3400.
--	---

ASOS 135.575	SEATTLE CENTER 123.95 290.55	LEWISTON TOWER ★ 119.4 (CTAF) 0 318.8	GND CON 121.9	UNICOM 122.95
-----------------	---------------------------------	--	------------------	------------------



ELEV 1442	D	TDZE 1417
-----------	---	-----------



6000	VOSKY	6000	EVHOG	tr 050°	OFINO
3900	ONLAW	IYTAM	2659	2254	117°
GP 3.10°	See Planview for multiple IF locations.				
TCH 56					
3.7 NM	1.2	2.5 NM			
CATEGORY	A	B	C	D	
RNP 0.30 DA*	1685-7 ⁸	268 (300-7 ⁸)			
RNP 0.30 DA	1889-1 ³	472 (500-1 ³)			

AUTHORIZATION REQUIRED

NW-1, 10 JUL 2025 to 07 AUG 2025

NW-1, 10 JUL 2025 to 07 AUG 2025