

LEWISTON, IDAHO

AL-515 (FAA)

22083

APP CRS	Rwy Idg	<b>4750</b>
<b>297°</b>	TDZE	<b>1439</b>
	Apt Elev	<b>1442</b>

RNAV (RNP) RWY 30  
LEWISTON/NEZ PERCE COUNTY (LWS)

RNP AR APCH-GPS.

**T** For uncompensated Baro-VNAV systems, procedure NA below -12°C or above 54°C.  
Missed approach requires RNP less than RNP 1.00.

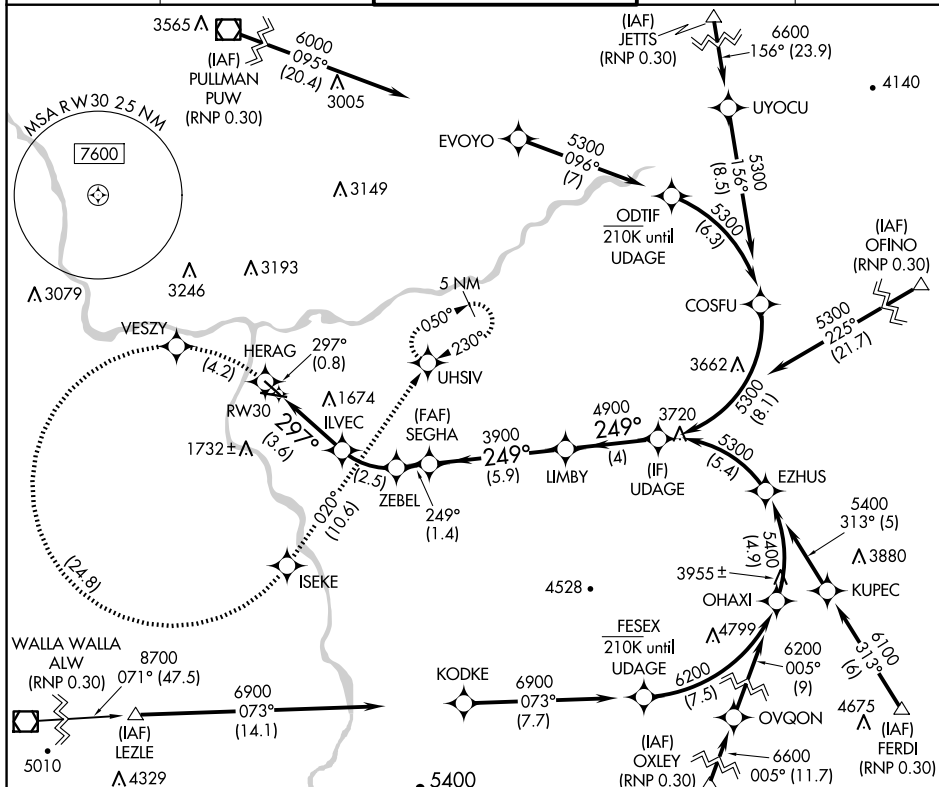
MISSED APPROACH: Climb to 6000 on track 297° to HERAG then left turn to VESZY then left turn to ISEKE and track 020° to UHSIV and hold.

ASOS  
135.575

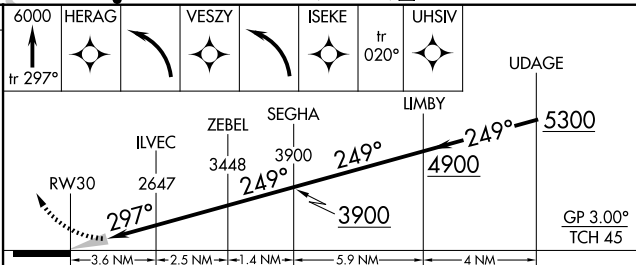
SEATTLE CENTER  
123.95 290.55

LEWISTON TOWER ★  
119.4 (CTAF) **L** 318.8

GND CON  
121.9

UNICOM  
122.95

ELEV 1442	<b>D</b>	TDZE 1439
-----------	----------	-----------



**AUTHORIZATION REQUIRED**

LEWISTON, IDAHO  
Amdt 1 24MAR22

LEWISTON/NEZ PERCE COUNTY (LWS)  
RNAV (RNP) RWY 30

46°22'N-117°01'W

NW-1, 10 JUL 2025 to 07 AUG 2025

NW-1, 10 JUL 2025 to 07 AUG 2025