

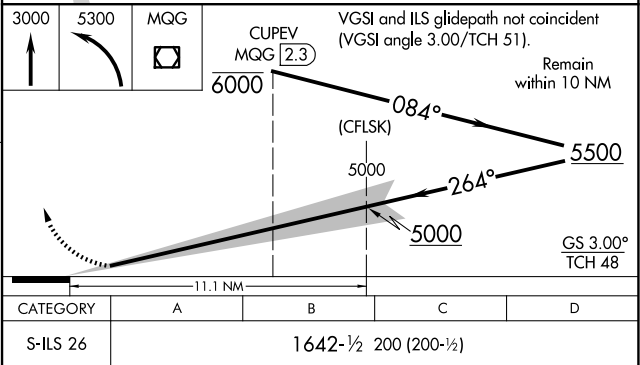
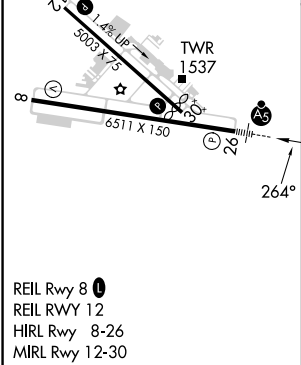
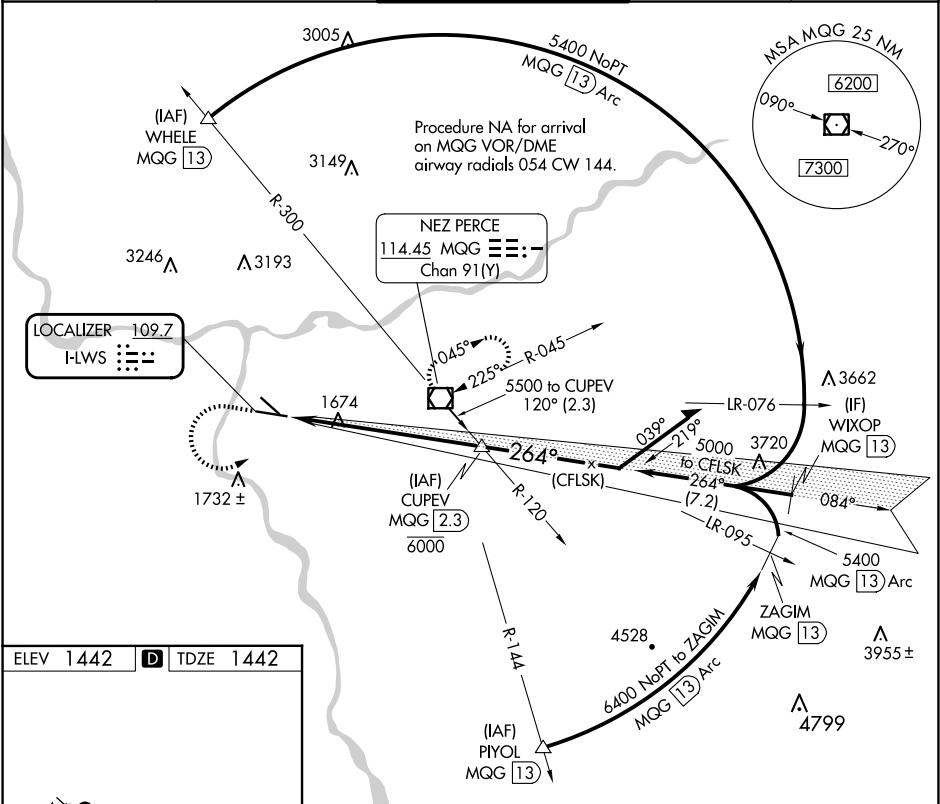
LOC I-LWS	APP CRS	Rwy Idg	6511
109.7	264°	TDZE	1442
		Apt Elev	1442

ILS RWY 26

LEWISTON/NEZ PERCE COUNTY (LWS)

<p>When local altimeter setting not received, procedure NA. Autopilot coupled approach NA below 2500.</p>	<p>MALSR</p>	<p>MISSED APPROACH: Climb to 3000 then climbing left turn to 5300 direct MQG VOR/DME and hold, continue climb-in-hold to 5300.</p>
---	--------------	--

ASOS 135.575	SEATTLE CENTER 123.95 290.55	LEWISTON TOWER ★ 119.4 (CTAF) 0 318.8	GND CON 121.9	UNICOM 122.95
-----------------	---------------------------------	--	------------------	------------------



NW-1, 10 JUL 2025 to 07 AUG 2025

NW-1, 10 JUL 2025 to 07 AUG 2025