

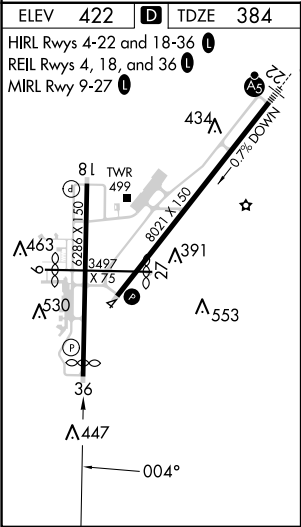
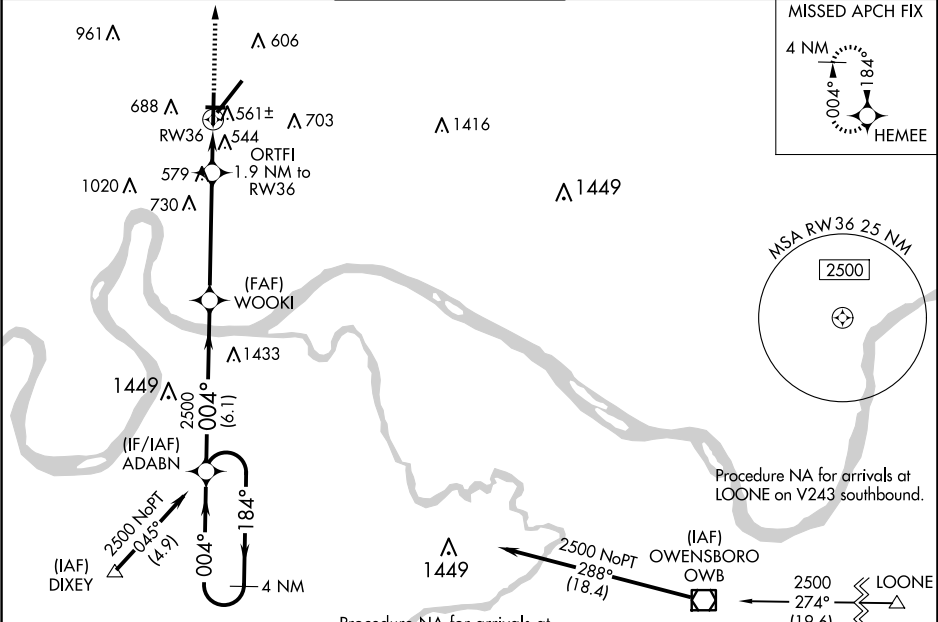
WAAS CH 90421 W36A	APP CRS 004°	Rwy Idg 5497 TDZE 384 Apt Elev 422
--	------------------------	---

RNAV (GPS) RWY 36

EVANSVILLE RGNL (EVV)

ASR	For uncompensated Baro-VNAV systems, LNAV/VNAV NA below -15°C (5°F) or above 54°C (130°F). DME/DME RNP-0.3 NA. Circling Rwy 9 NA at night. Helicopter visibility reduction below ¾ SM NA.	MISSED APPROACH: Climb to 2500 direct HEMEE and hold.
-----	---	---

ATIS 120.2	EVANSVILLE APP CON ★ 124.025 290.9	EVANSVILLE TOWER ★ 118.7 (CTAF) 257.8	GND CON 121.9	CLNC DEL 126.6	UNICOM 122.95
----------------------	--	---	-------------------------	--------------------------	-------------------------



4 NM Holding Pattern		VGSi and RNAV glidepath not coincident (VGSi Angle 3.00/TCH 30).		2500	HEMEE
ADABN		WOOKI		ORTFI 1.9 NM to RW36	*LNAV only
2500 184° 004° 2500		2500		*1.3 NM to RW36	
GP 3.00° TCH 55		*1040			
6.1 NM		4.6 NM		0.6 NM	1.3
CATEGORY	A	B	C	D	
LPV DA	634-¾		250 (300-¾)		
LNAV/VNAV DA	891-1¾		507 (500-1¾)		
LNAV MDA	820-1 436 (500-1)		820-1¼ 436 (500-1¼)		
CIRCLING	920-1 498 (500-1)	1040-1 618 (700-1)	1040-1¾ 618 (700-1¾)	1040-2 618 (700-2)	