

WAAS CH <b>42512</b> <b>W22A</b>	APP CRS <b>221°</b>	Rwy Idg TDZE <b>422</b> Apt Elev <b>422</b>	<b>8021</b>
--	------------------------	---	-------------

RNAV (GPS) RWY 22

EVANSVILLE RGNL (EVV)

ASR

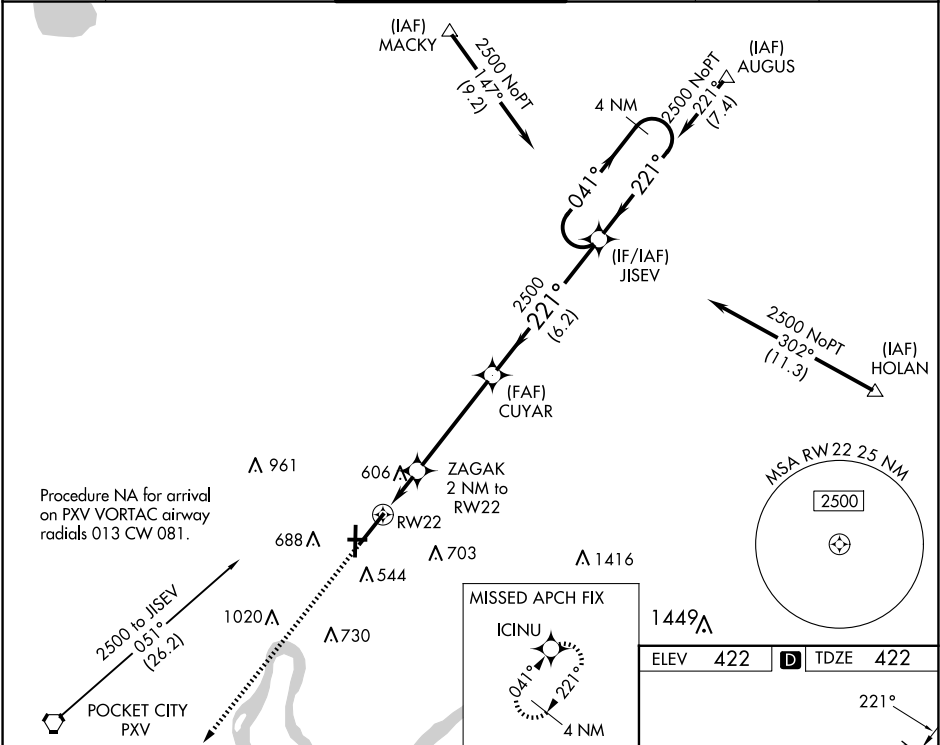
For uncompensated Baro-VNAV systems, LNAV/VNAV NA below -1.5°C (5°F) or above 54°C (130°F). DME/DME RNP-0.3 NA. Circling Rwy 9 NA at night.  
\*\* RVR 1800 authorized with the use of FD or AP or HUD to DA.

MALS

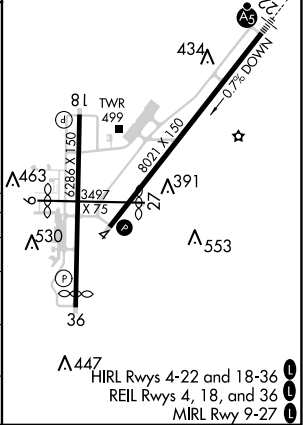
MISSED APPROACH:

Climb to 2500 direct ICINU and hold.

ATIS <b>120.2</b>	EVANSVILLE APP CON ★ <b>124.025 290.9</b>	EVANSVILLE TOWER ★ <b>118.7 (CTAF) 257.8</b>	GND CON <b>121.9</b>	CLNC DEL <b>126.6</b>	UNICOM <b>122.95</b>
----------------------	--	---	-------------------------	--------------------------	-------------------------



		ZAGAK 2 NM to RW22	CUYAR 2500	JISEV	4 NM Holding Pattern
*LNAV only	*1.2 NM to RW22	*1100	2500	041°	221°
	1.2 NM	0.8	4.4 NM	6.2 NM	GP 3.00° TCH 50
CATEGORY	A	B	C	D	
LPV DA	**622/24		200 (200-½)		
LNAV/VNAV DA	840/45		418 (500-¾)		
LNAV MDA	860/24		438 (500-½)	860/40	438 (500-¾)
CIRCLING	920-1 498 (500-1)	1040-1 618 (700-1)	1040-1¾ 618 (700-1¾)	1040-2 618 (700-2)	



EC-2, 10 JUL 2025 to 07 AUG 2025

EC-2, 10 JUL 2025 to 07 AUG 2025