

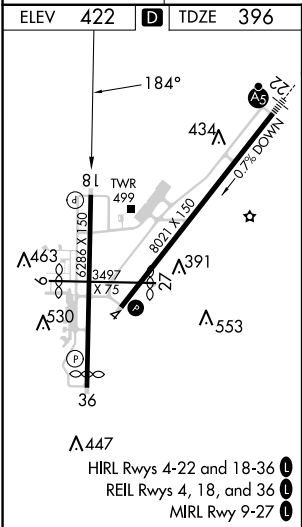
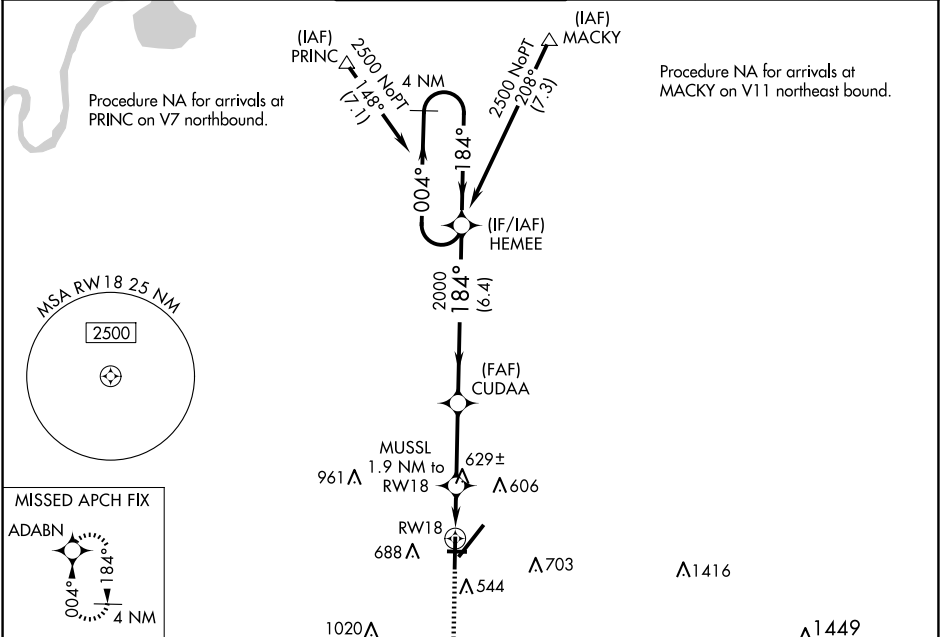
| | | |
|--|------------------------|---|
| WAAS CH 50421 W18A | APP CRS 184° | Rwy Idg 5498 TDZE 396 Apt Elev 422 |
|--|------------------------|---|

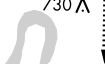



RNAV (GPS) RWY 18

EVANSVILLE RGNL (E V V)

| | | |
|-----|---|---|
| ASR | For uncompensated Baro-VNAV systems, LNAV/VNAV NA below -15°C (5°F) or above 54°C (130°F). DME/DME RNP-0.3 NA. Circling Rwy 9 NA at night. Helicopter visibility reduction below ¾ SM NA. | MISSED APPROACH: Climb to 2500 direct ADABN and hold. |
|-----|---|---|

| | | | | | |
|----------------------|--|--|-------------------------|--------------------------|-------------------------|
| ATIS 120.2 | EVANSVILLE APP CON ★ 124.025 290.9 | EVANSVILLE TOWER ★ 118.7 (CTAF) 0 257.8 | GND CON 121.9 | CLNC DEL 126.6 | UNICOM 122.95 |
|----------------------|--|--|-------------------------|--------------------------|-------------------------|



| | | | | |
|--|---|---|---|-----------------------|
| <div>730 A</div> <div></div> | | | | |
| 2500 ↑ | ADABN  | VGSI and RNAV glidepath not coincident (VGSI Angle 3.00/TCH 49). | 4 NM Holding Pattern | |
| *LNAV only | MUSSL 1.9 NM to RW18 | CUDAA | HEMEE | |
| | *1.1 NM to RW18  | 2000 184° 2000 | 004° → 2500 ← 184° GP 3.00° TCH 60 | |
| | 1.1 0.8 3 NM 6.4 NM | | | |
| CATEGORY | A | B | C | D |
| LPV DA | 596-¾ 200 (200-¾) | | | |
| LNAV/ VNAV DA | 931-1¾ 535 (600-1¾) | | | |
| LNAV MDA | 880-1 | 484 (500-1) | 880-1⅓ | 484 (500-1⅓) |
|  CIRCLING | 920-1 498 (500-1) | 1040-1 618 (700-1) | 1040-1¾ 618 (700-1¾) | 1040-2 618 (700-2) |