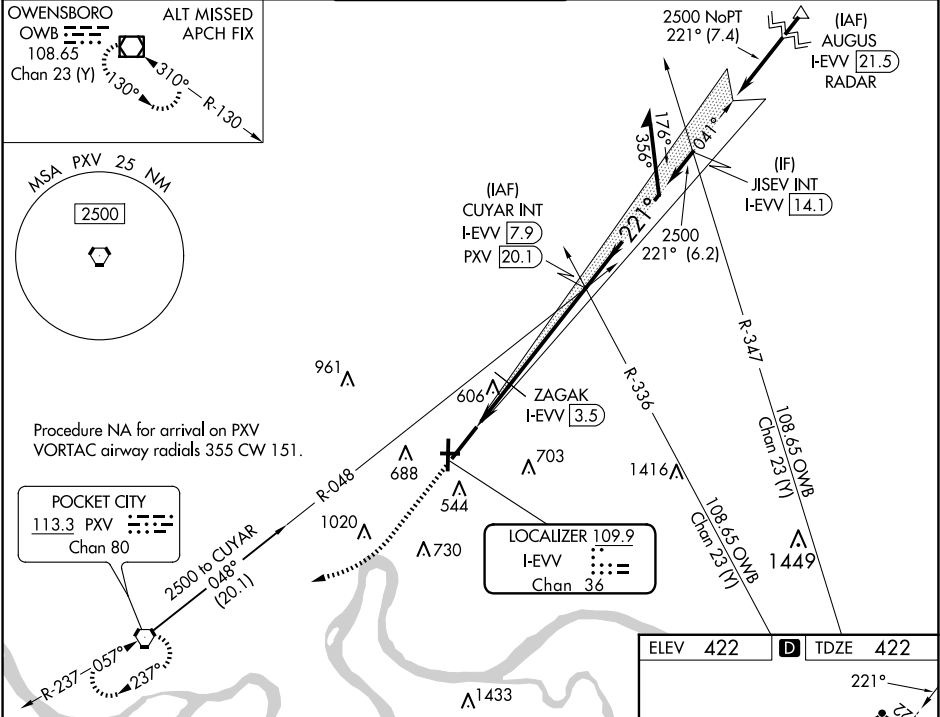


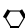
LOC/DME I-EVV	APP CRS	Rwy Idg	8021
109.9	221°	TDZE	422
Chan 36		Apt Elev	422

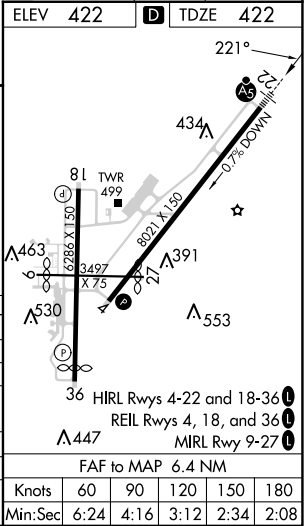
ILS or LOC RWY 22  
EVANSVILLE RGNL (E V V)

RADAR or DME required for procedure entry at AUGUS.				MALSR	MISSED APPROACH: Climb to 1000 then climbing right turn to 2500 direct PXV VORTAC and hold.
Circling Rwy 9 NA at night. For inop ALS, increase S-LOC 22 Cats C and D visibility to 1¾ SM. DME minimums: For inop ALS, increase S-LOC 22 Cats C and D visibility to RVR 6000. * RVR 1800 authorized with use of FD or AP or HUD to DA.					

ATIS	EVANSVILLE APP CON ★	EVANSVILLE TOWER ★	GND CON	CLNC DEL	UNICOM
120.2	124.025 290.9	118.7 (CTAF) 257.8	121.9	126.6	122.95



1000 ↑	2500 ↗	PXV 		
-----------	-----------	--	--	--



EC-2, 10 JUL 2025 to 07 AUG 2025

EC-2, 10 JUL 2025 to 07 AUG 2025