

TACAN RWY 4

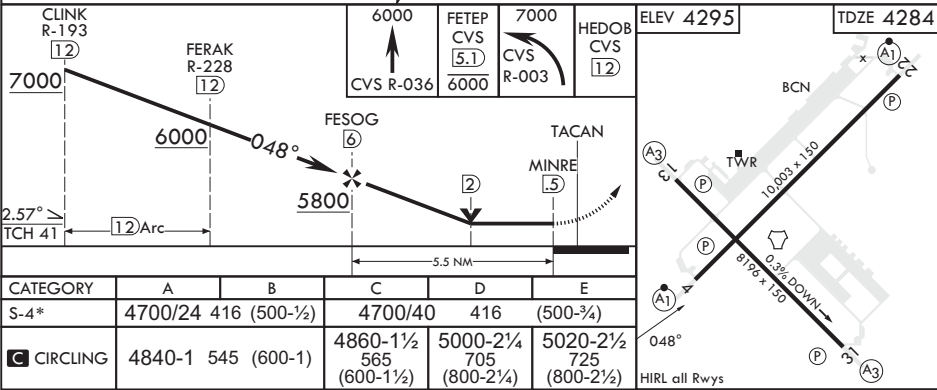
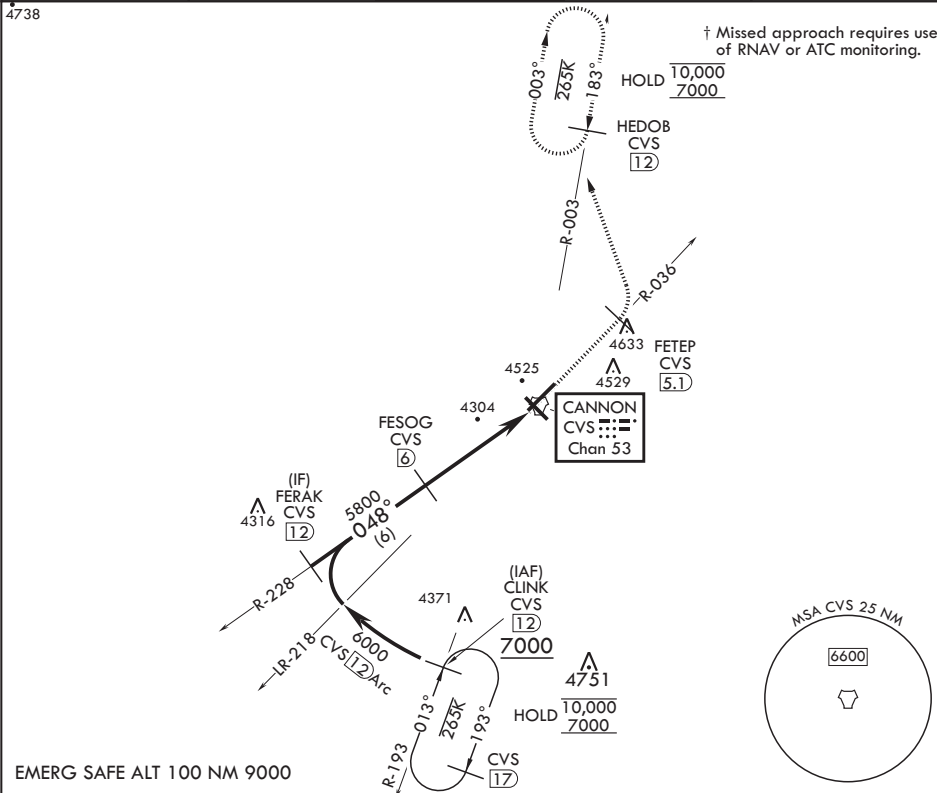
TACAN CVS Chan 53	APCH CRS 048°	Rwy ldg TDZE Arprt Elev	10,003 4284 4295
----------------------	------------------	-------------------------------	------------------------

AL-512 (USAF)

CANNON AFB (KCVS)

† * When ALS inop, increase CAT AB RVR to 55, vis to 1 mile; CAT CDE RVR to 60, vis to 1 1/8 miles.	ALSIF-1 	† MISSED APPROACH: Climb to 6000 via CVS TACAN R-036 to 5.1 DME (FETEP), cross FETEP at or below 6000, then turn left climbing to 7000 to intercept CVS TACAN R-003 to 12 DME (HEDOB) and hold.
---	-------------	---

ATIS 119.1 269.9	CANNON APP CON 118.425 352.1	TOWER 120.4 270.25	GND CON 121.9 275.8	CLNC DEL 120.2 293.225
---------------------	---------------------------------	-----------------------	------------------------	---------------------------



TACAN RWY 4

SW-1, 10 JUL 2025 to 07 AUG 2025

SW-1, 10 JUL 2025 to 07 AUG 2025