

CLOVIS, NEW MEXICO

RNAV (GPS) RWY 4

WAAS CH 41172 W04A	APCH CRS 038°	Rwy Idg TDZE Arpt Elev	10,003 4284 4295
--------------------------	------------------	------------------------------	------------------------

AL-512 (USAF)

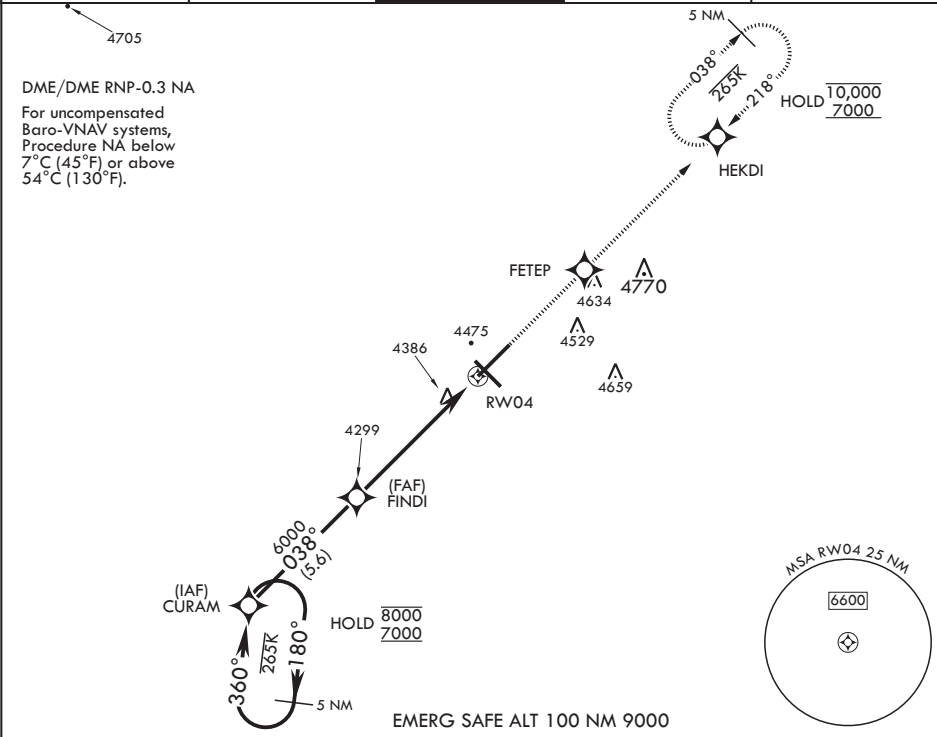
CANNON AFB (KCVS)

⚠ * When ALS inop, increase RVR to 40, vis to 3/4 mile.
** When ALS inop increase RVR to 60 vis to 1 1/8 miles.
*** When ALS inop, increase CAT AB RVR to 55, vis to 1 mile;
CAT CDE RVR to 60, vis to 1 1/8 miles.

ALS-1

MISSED APPROACH: Climb to 7000 direct FETEP, then track to HEKDI and hold.

ATIS 119.1 269.9	CANNON APP CON 118.425 352.1	TOWER 120.4 270.25	GND CON 121.9 275.8	CLNC DEL 120.2 293.225
---------------------	---------------------------------	-----------------------	------------------------	---------------------------



5 NM Holding Pattern

VGSI and RNAV glidepath not coincident (VGSI angle 2.50/TCH 41°).

7000 FETEP

ELEV 4295 TDZE 4284

GP 2.50° TCH 46

6.3 NM

1.4 NM to RWY04

BCN

10,003 x 150

0.3% DOWN

8196 x 150

038°

A1 A3

CATEGORY	A	B	C	D	E
LPV DA*	4484/24	200	(200-1/2)		
LNAV/VNAV DA**	4700/40	416	(500-3/4)		
LNAV MDA***	4700/24 416 (500-1/2)	4700/40 416 (500-3/4)			
C CIRCLING	4840-1 545 (600-1)	4840-1 1/2 545 (600-1 1/2)	4980-2 1/4 685 (700-2 1/4)	5020-2 1/2 725 (800-2 1/2)	

HIRL all Rwys

CLOVIS, NEW MEXICO

34°23'N - 103°19'W

CANNON AFB (KCVS)

Amdt 3 07OCT21

RNAV (GPS) RWY 4

SW-1, 10 JUL 2025 to 07 AUG 2025

SW-1, 10 JUL 2025 to 07 AUG 2025