

CLOVIS, NEW MEXICO

RNAV (GPS) RWY 31

APCH CRS 308°	Rwy Idg TDZE Arpt Elev	8196 4270 4295
------------------	------------------------------	----------------------

- (USAF)

CANNON AFB (KCVS)

RNP APCH

T * When ALS inop, increase CAT AB vis to 1 mile, CAT CDE vis to 1 3/8 miles.



MISSED APPROACH: Climb to 7000 direct RAPKE, then turn right to ZUNEN and hold.

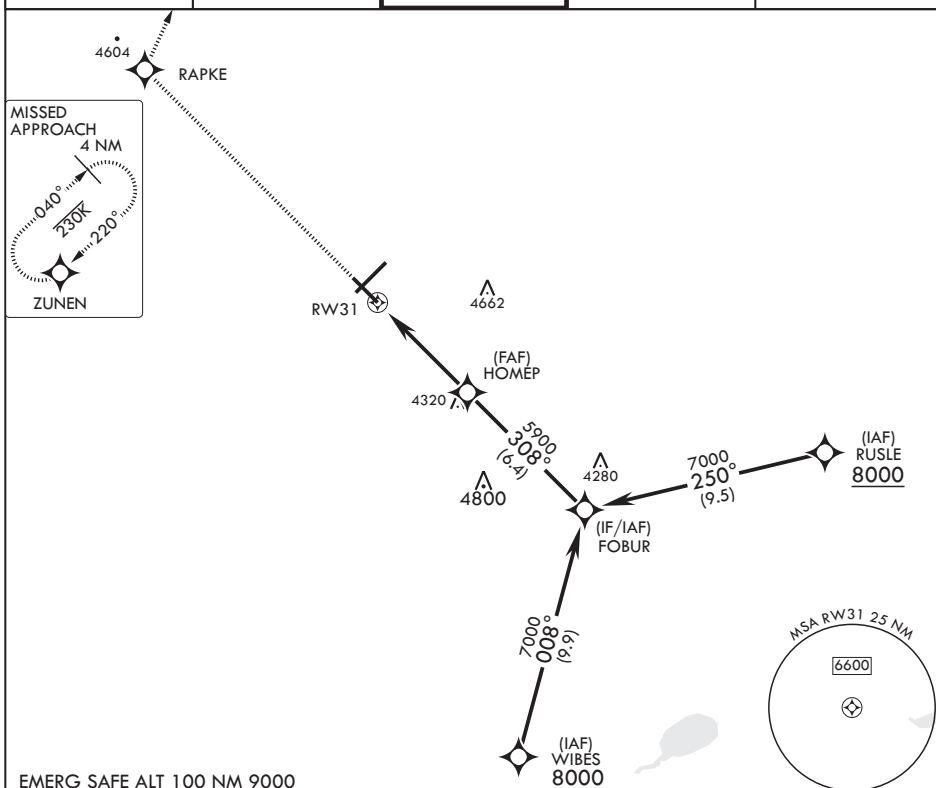
ATIS
119.1 269.9

CANNON APP CON
118.425 352.1

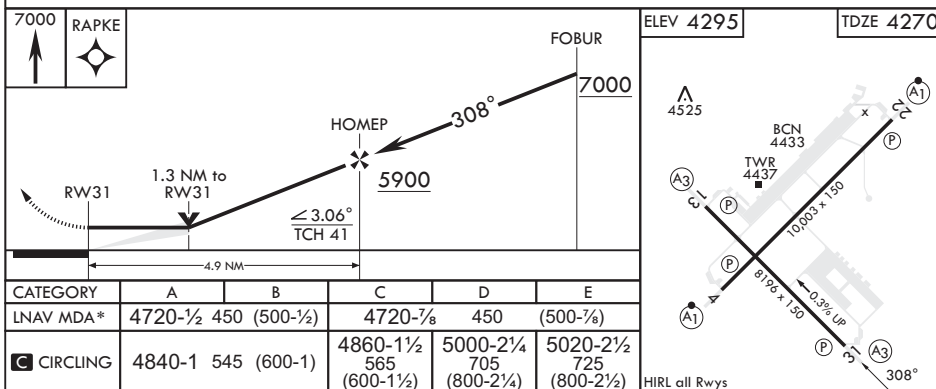
TOWER
120.4 270.25

GND CON
121.9 275.8

CLNC DEL
120.2 293.225



EMERG SAFE ALT 100 NM 9000



CLOVIS, NEW MEXICO

34°23'N - 103°19'W

CANNON AFB (KCVS)

Amdt 5 28DEC23

RNAV (GPS) RWY 31